



Photo © J.P.Kjeldsen

## Workshop for the Revision of Pink-footed Goose ISSMP

*Annex 1 / Biological assessment*  
*Jesper Madsen*

7-8 October 2024 | Levanger, Norway



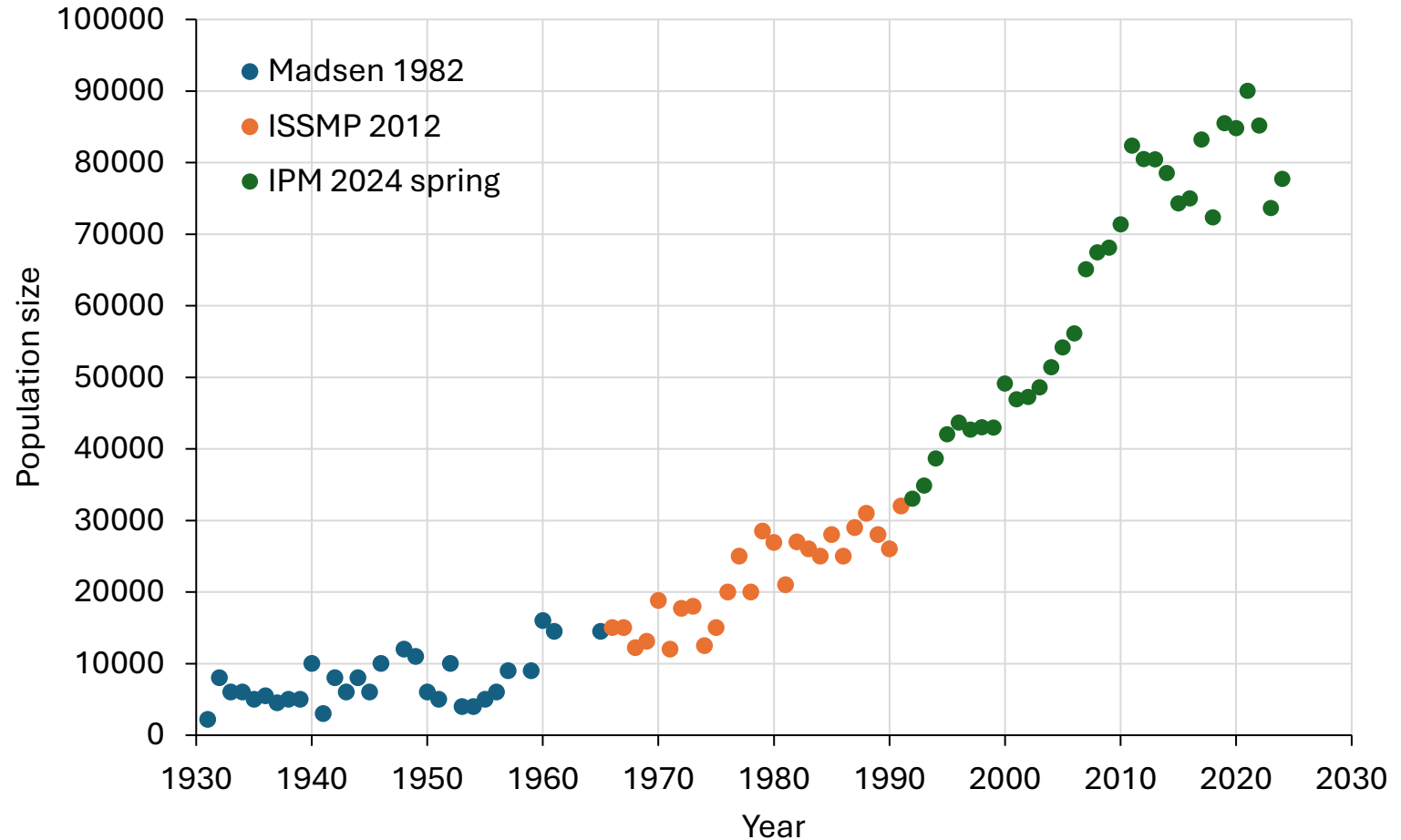
AEWA



AEWA European Goose  
Management Platform



# AEWA European Goose Management Platform

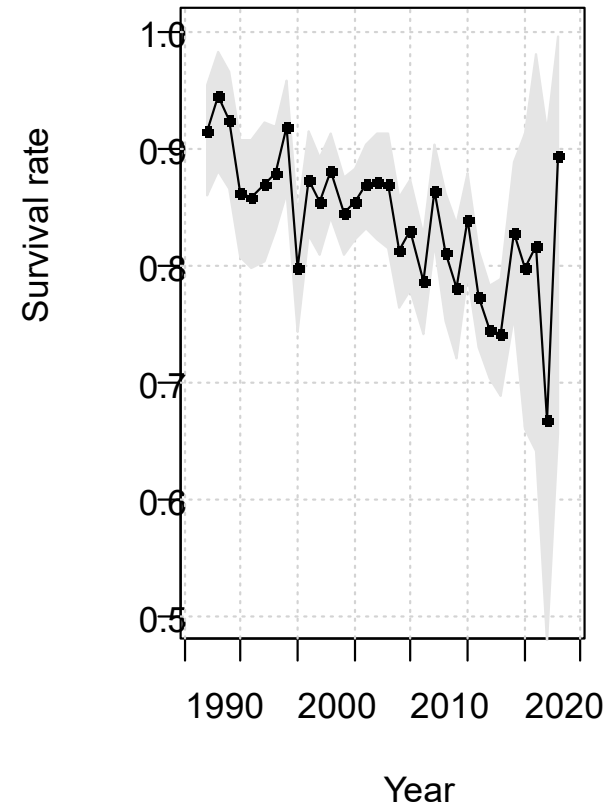
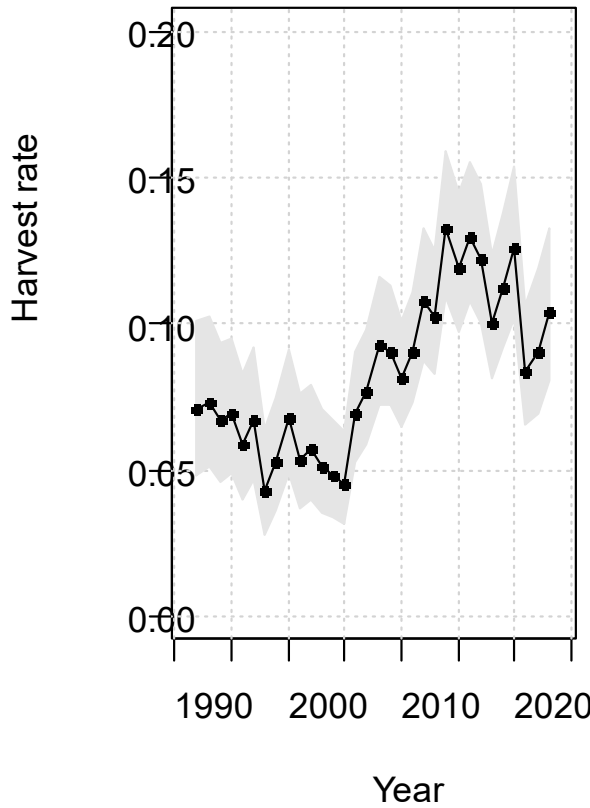


7-8 October 2024 | Levanger, Norway



# AEWA European Goose Management Platform

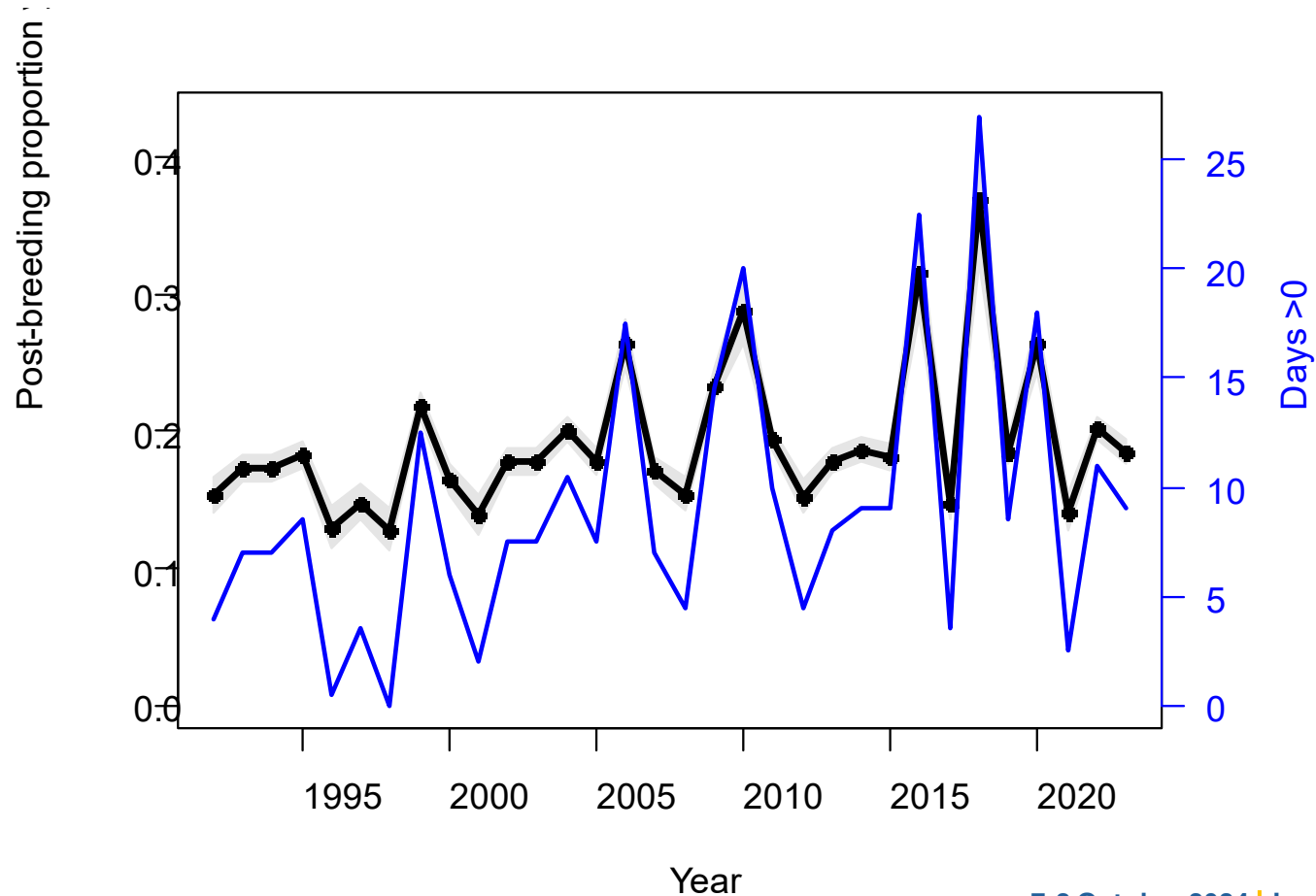
## Survival and harvest: opposing trends (based on an IPM)



# AEWA European Goose Management Platform

Productivity post-hatch (based on an IPM):

- strongly correlated with May temperatures in Svalbard
- increasing trend and increasing fluctuations in spring temperatures



7-8 October 2024 | Levanger, Norway



AEWA



AEWA European Goose Management Platform



Example of nest faith i relation to snow cover  
Automated camera, Sassendalen, 2024  
COAT-program





2024-05-25 07:38:00

T

-1°C



JM13 2022





2024-05-26 18:00:00

T

-1°C



JM13 2022





2024-05-27 02:10:00

T

-4°C



JM13 2022





2024-05-27 03:08:00

T

-4°C



JM13 2022





2024-05-27 03:10:00

T

-4°C



JM13 2022





2024-07-03 09:26:00

T

0

18°C



JM13 2022

RECONYX





Traditionally, Pink-footed Geese mainly foraged on extensive grasslands and salt marshes

Pink-footed Geese wintering in the Oostkustpolders Natura 2000 area, Vlaanderen, Belgium

7-8 October 2024 | Levanger, Norway





## Agricultural land use changes:

- Attractive habitat
- => Range expansion
- => Shortstopping

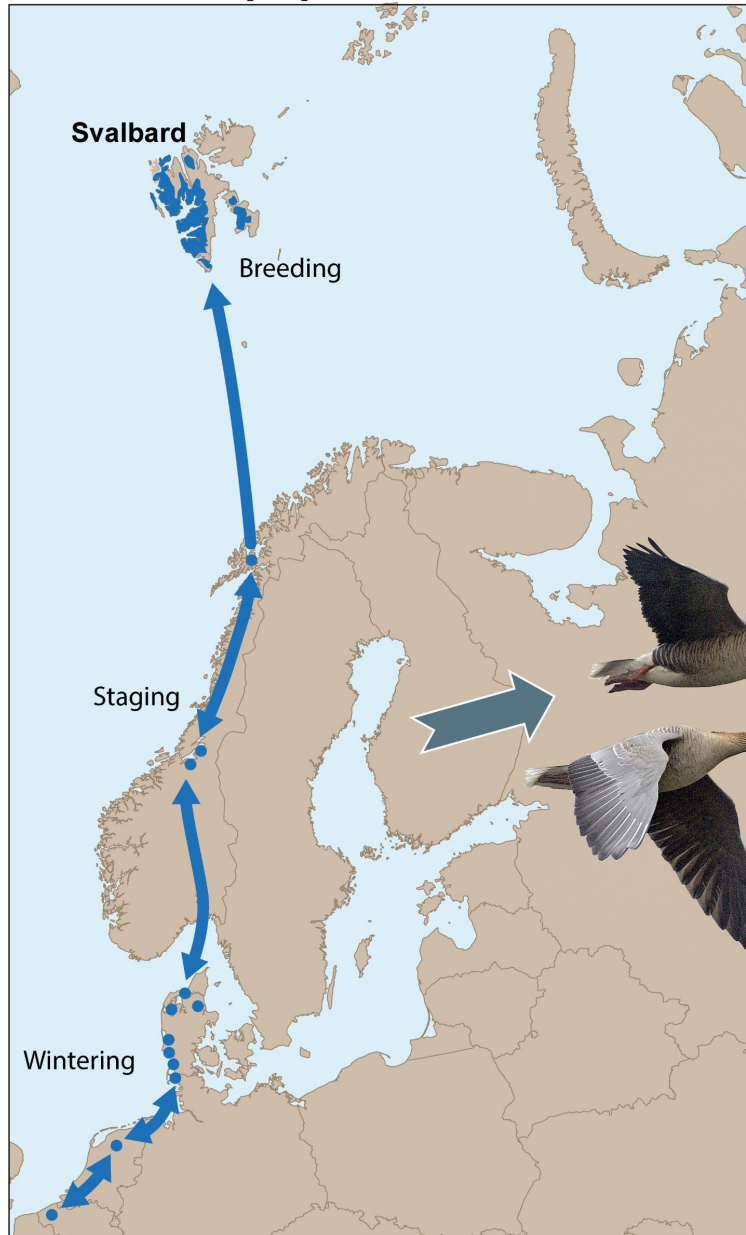
In the 1990s:  
Winter cereals

In the 2000s:  
maize

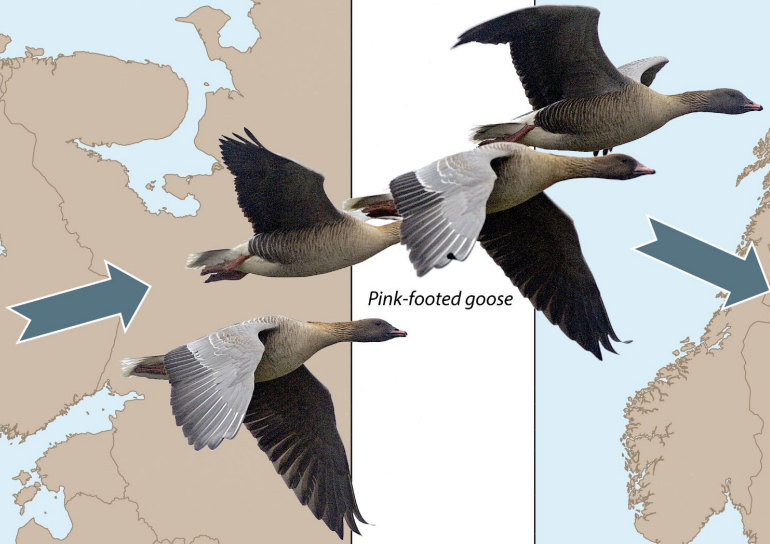




# Traditional population



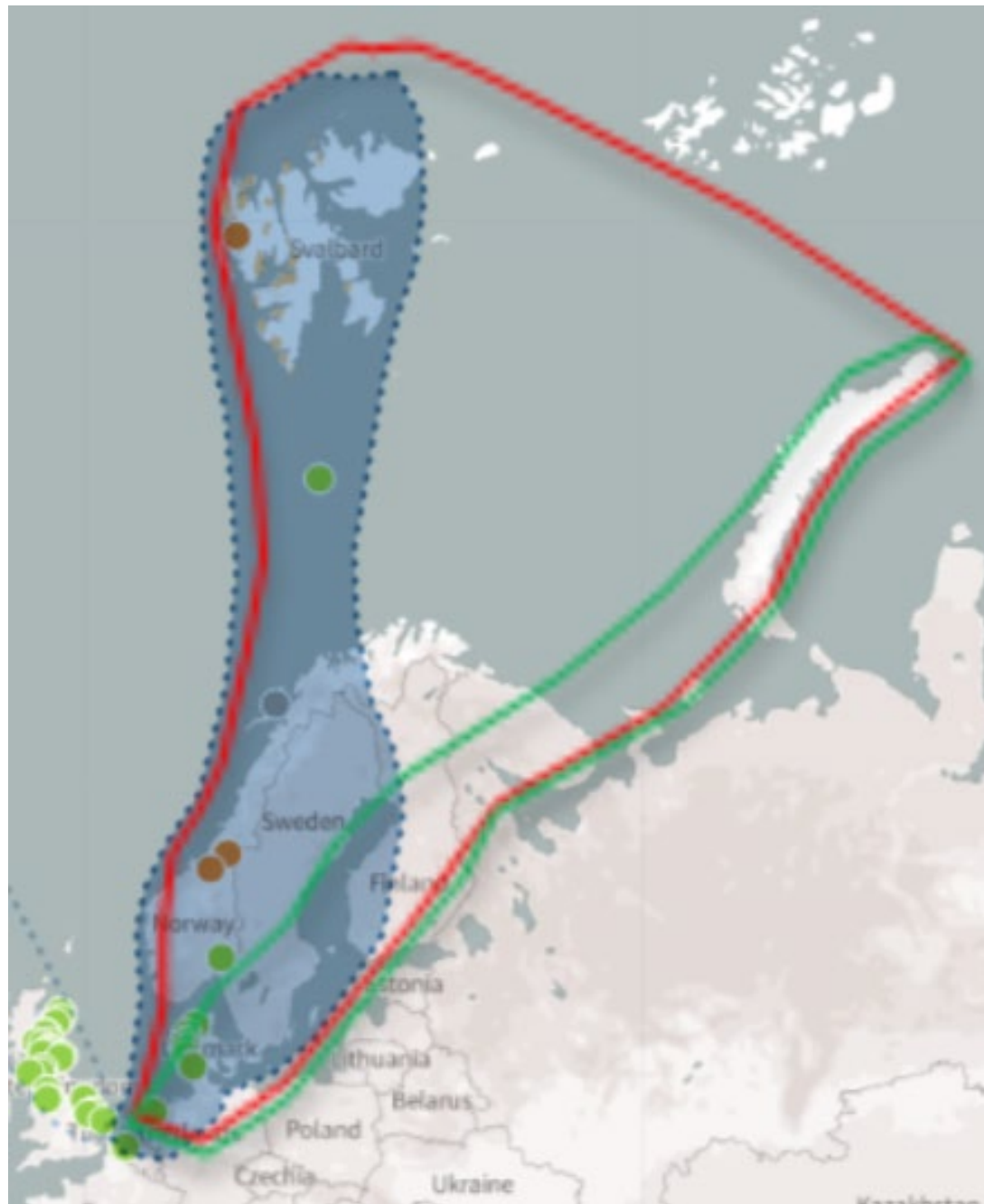
# New population



7-8 October 2024 | Levanger, Norway







7-8 October 2024 | Levanger, Norway



UNEP AEWA



AEWA European Goose Management Platform



# AEWA European Goose Management Platform



Jørgen Peter Kjeldsen

7-8 October 2024 | Levanger, Norway

