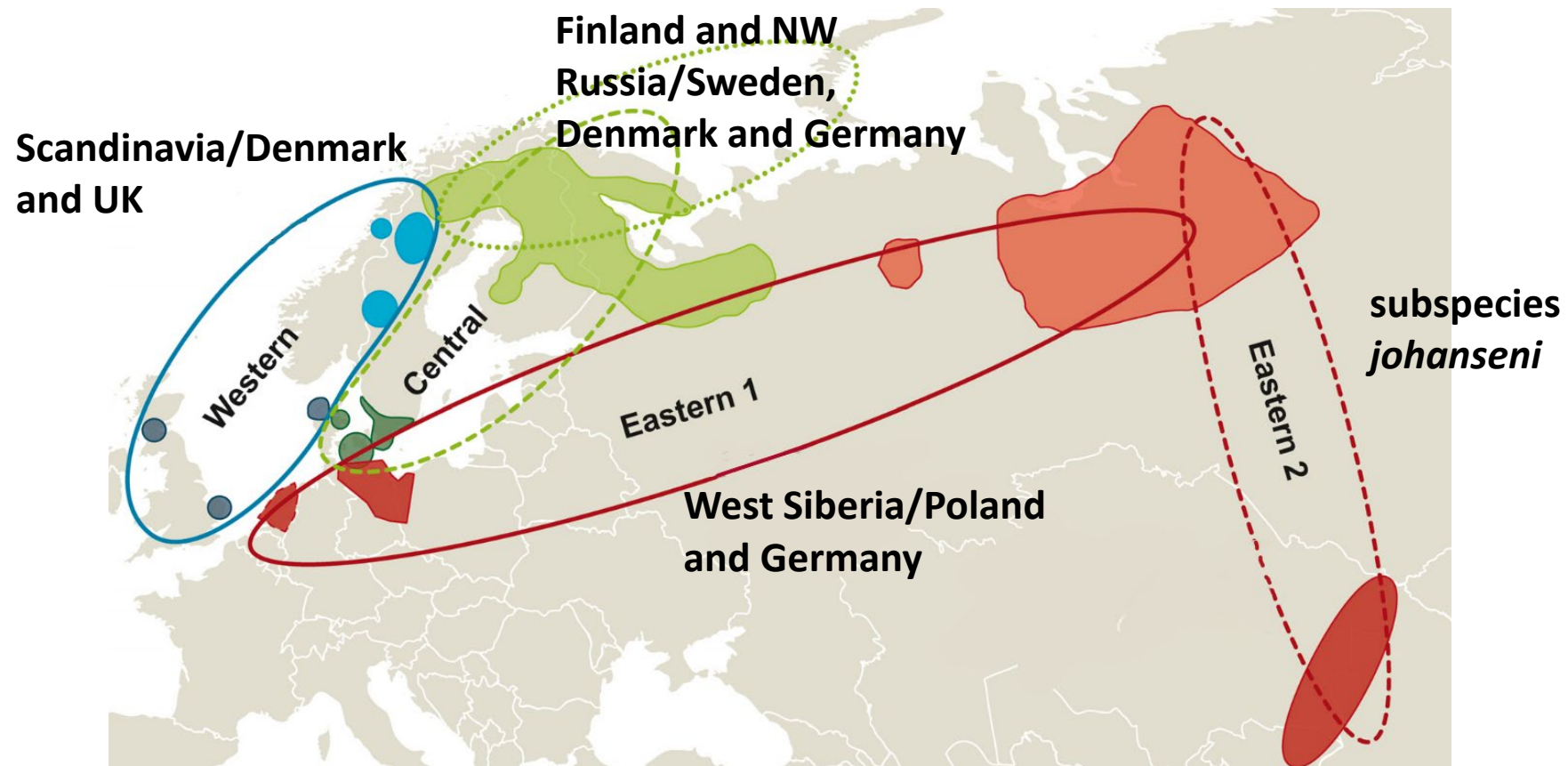


© Marco Gola

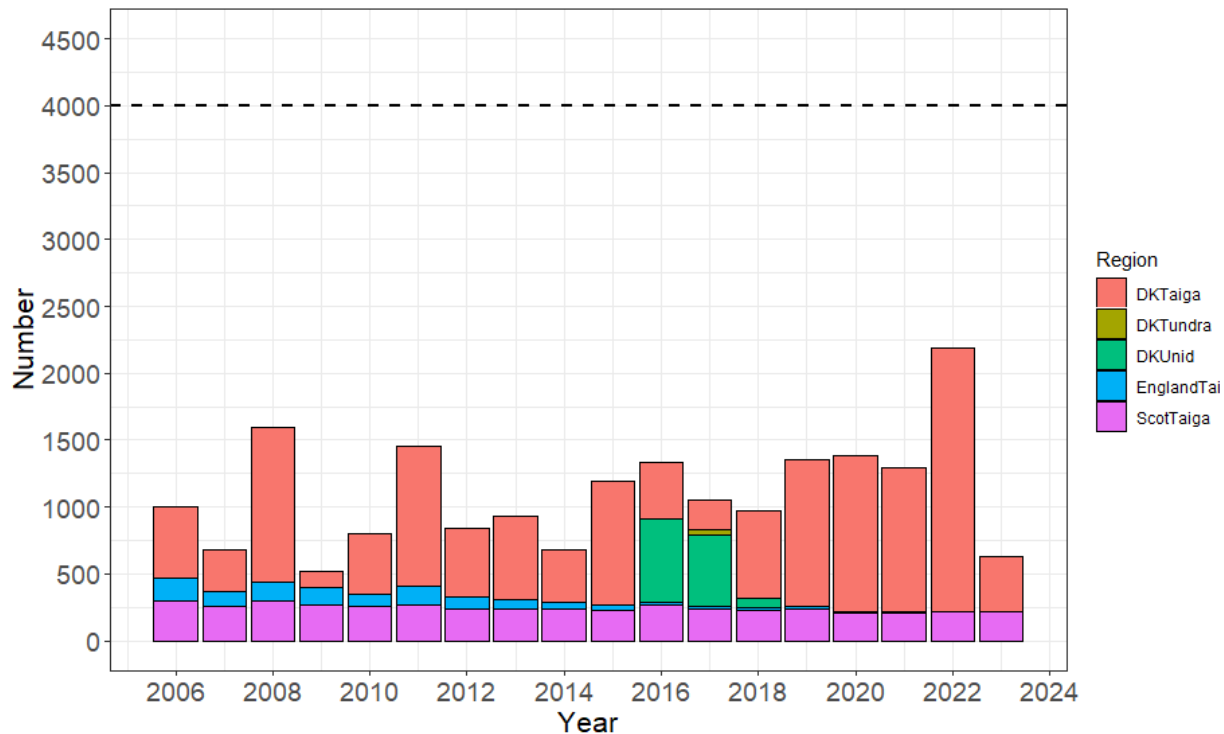
Taiga Bean Goose Session

EGMP POPULATION STATUS AND OFFTAKE ASSESSMENT REPORT 2023

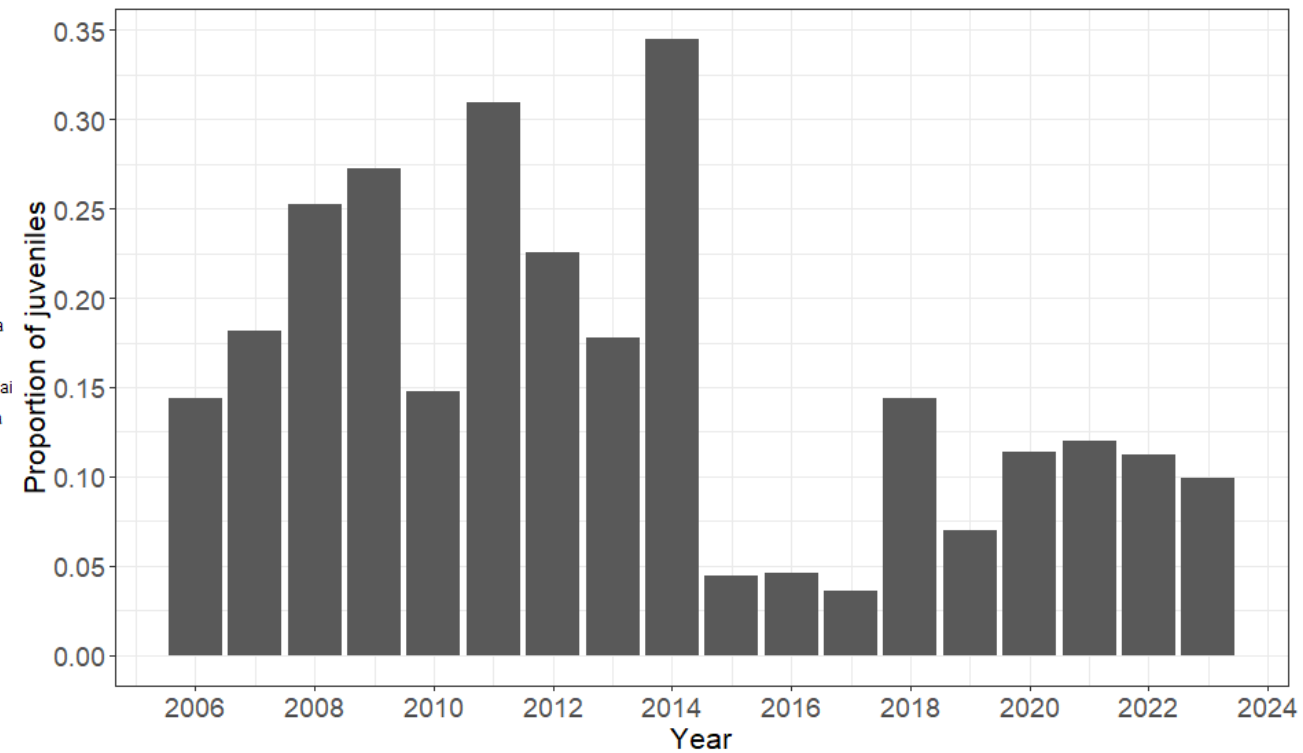
Management units are now “populations”



“Western” population



Winter abundance
(counting difficulties in 2023)

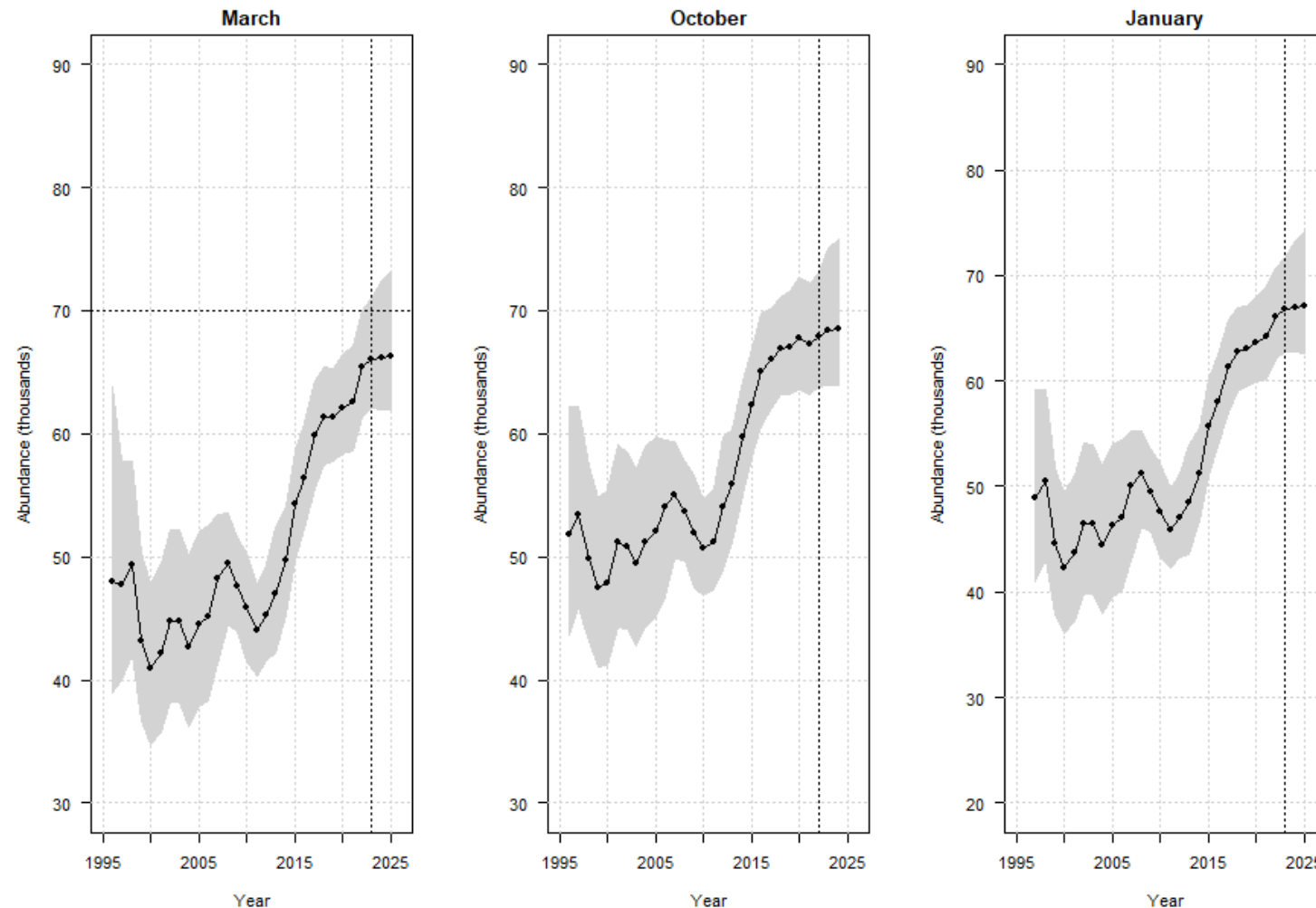


Reproduction
(small sample size in 2023)

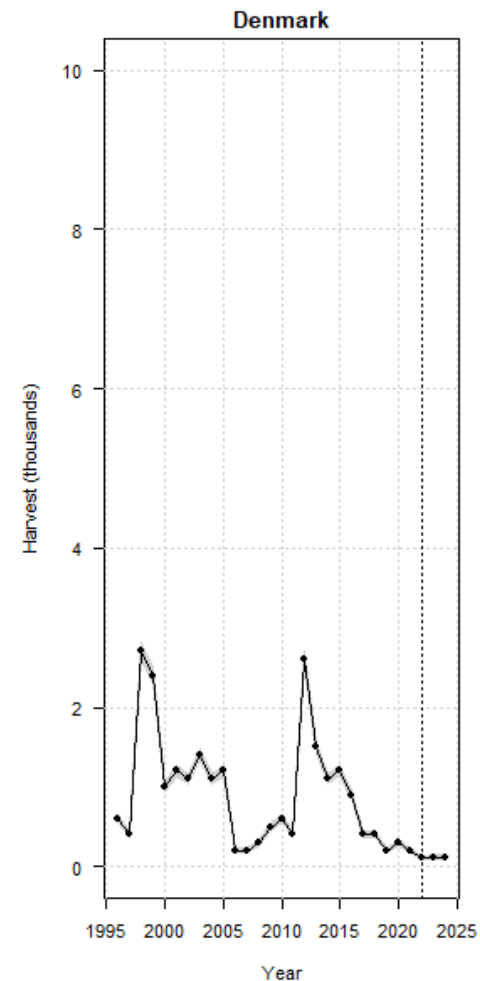
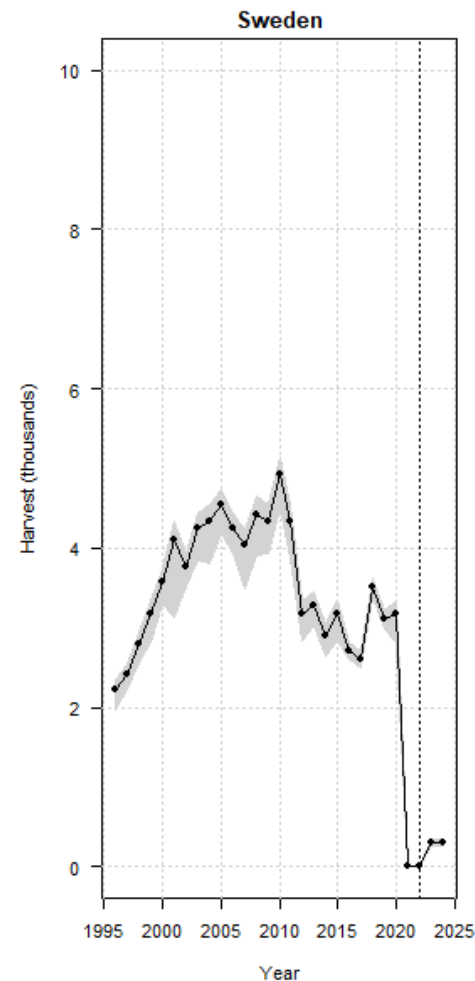
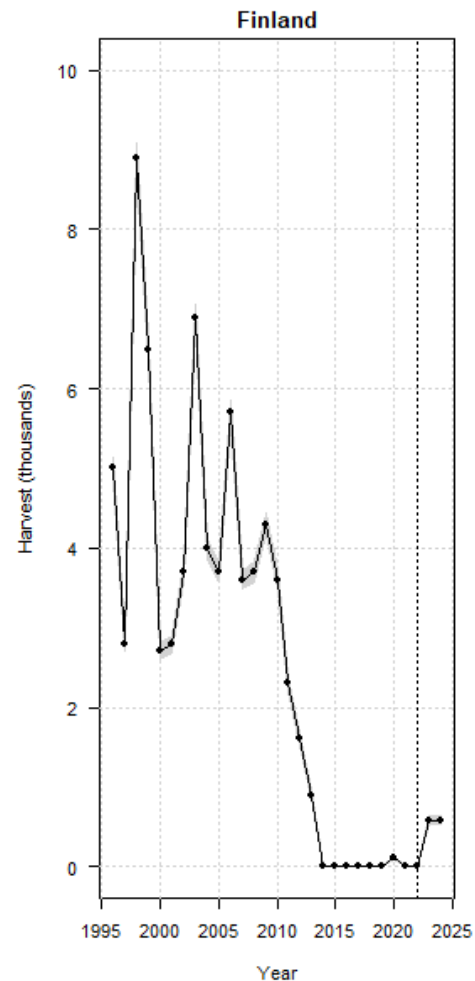


**“Eastern”
population**

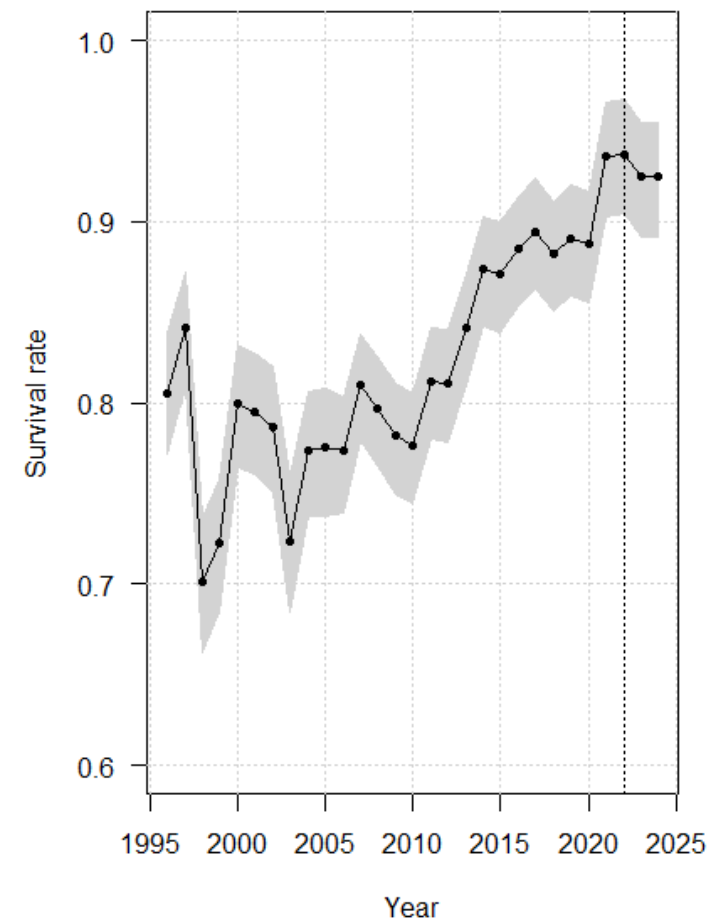
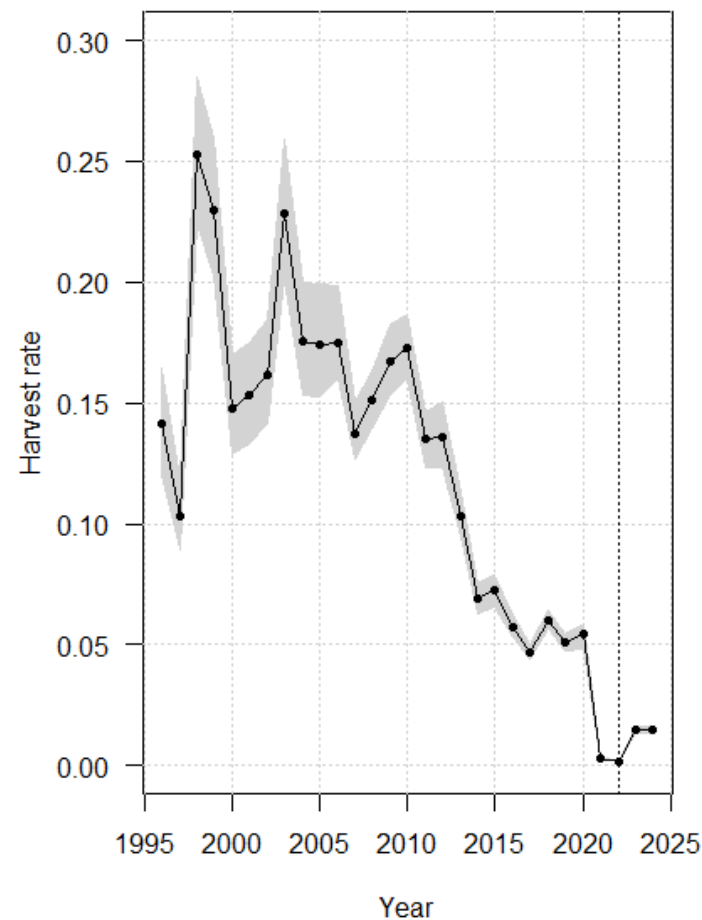
“Central” population - abundance



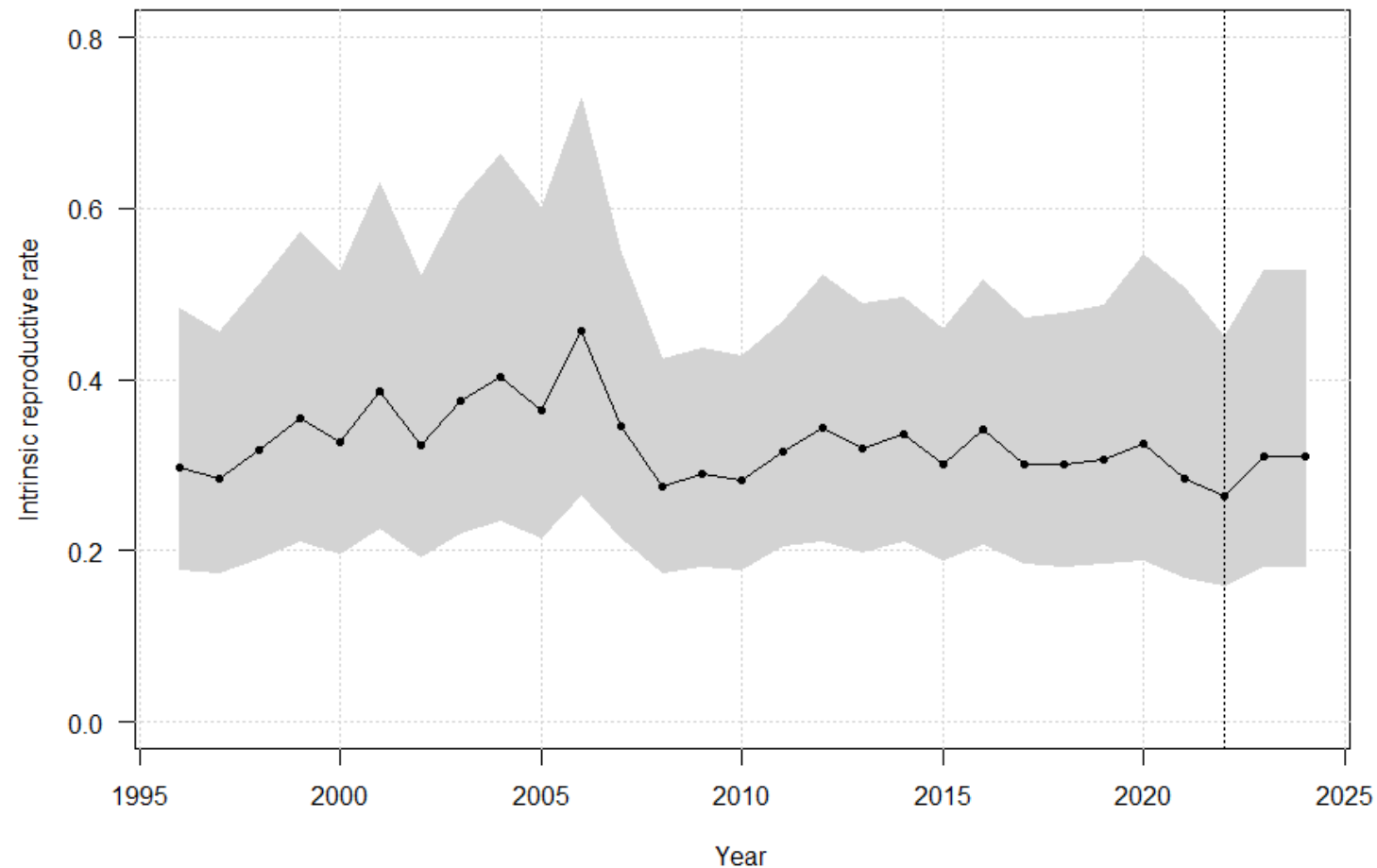
“Central” population - harvests



“Central” population - mortality

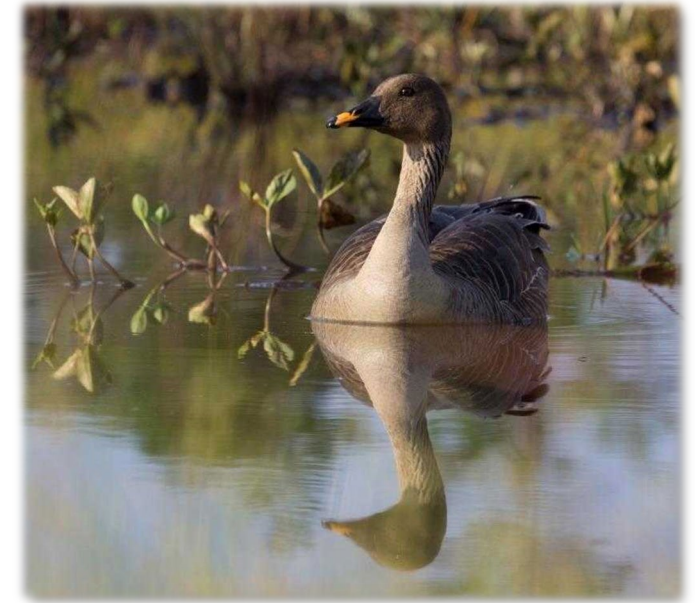


“Central” population - reproduction



Management guidance

- The “Western” population is protected from hunting.
- No guidance can be provided for the “Eastern” population.
- For the “Central” population:
 - forecasts of harvests of 1,000 birds for the years 2023 and 2024 intended to reflect the dramatic reductions in harvest over the last two years ($\bar{x} = 153$)
 - harvests of 1k are expected to maintain the population near its current level of 67k
 - of concern is that the estimate of the carrying capacity for the breeding population is 70.1K, which is identical to the population target of 70k. At $N = 70.1k$, there is *no* harvestable surplus
 - the maximum sustainable harvest of 8.9k could be achieved at a population level of 45k in spring



© Marco Gola

PARKING LOT

Density dependence and harvestable surplus

