

AEWA European Goose Management Platform



© Sergey Dereliev

Pink-footed Goose Session

EGMP POPULATION STATUS AND OFFTAKE ASSESSMENT REPORT 2024
Dr. Fred Johnson

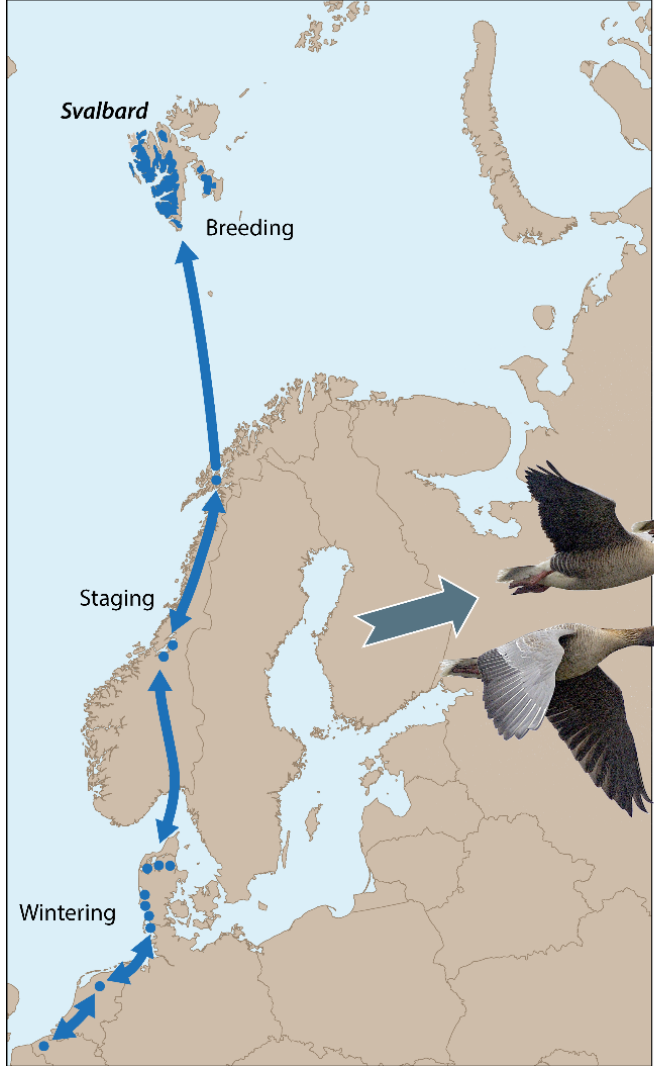
EGM IWG9 * 18-20 June 2024 * Tromsø, Norway



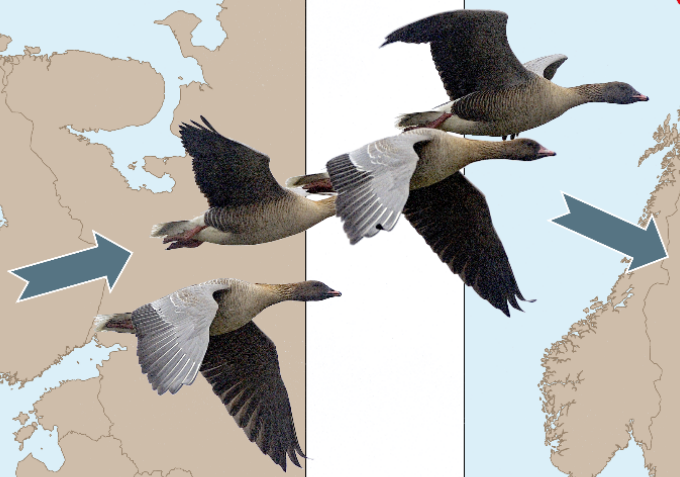
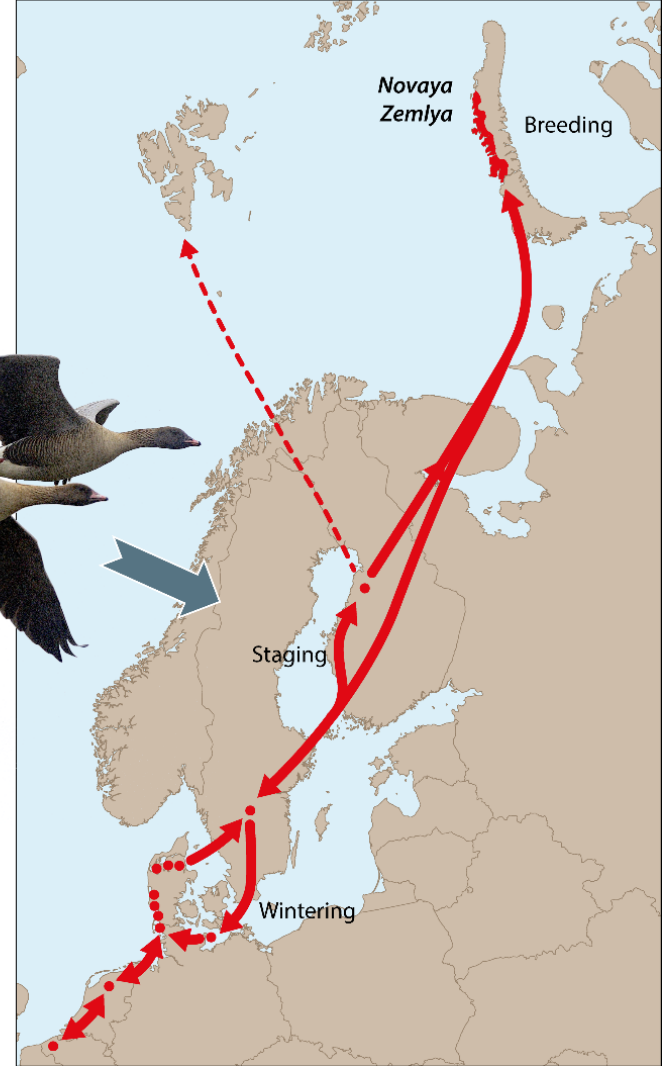
AEWA European Goose Management Platform

Doc. AEWA/EGMIWG/9.8

Traditional population



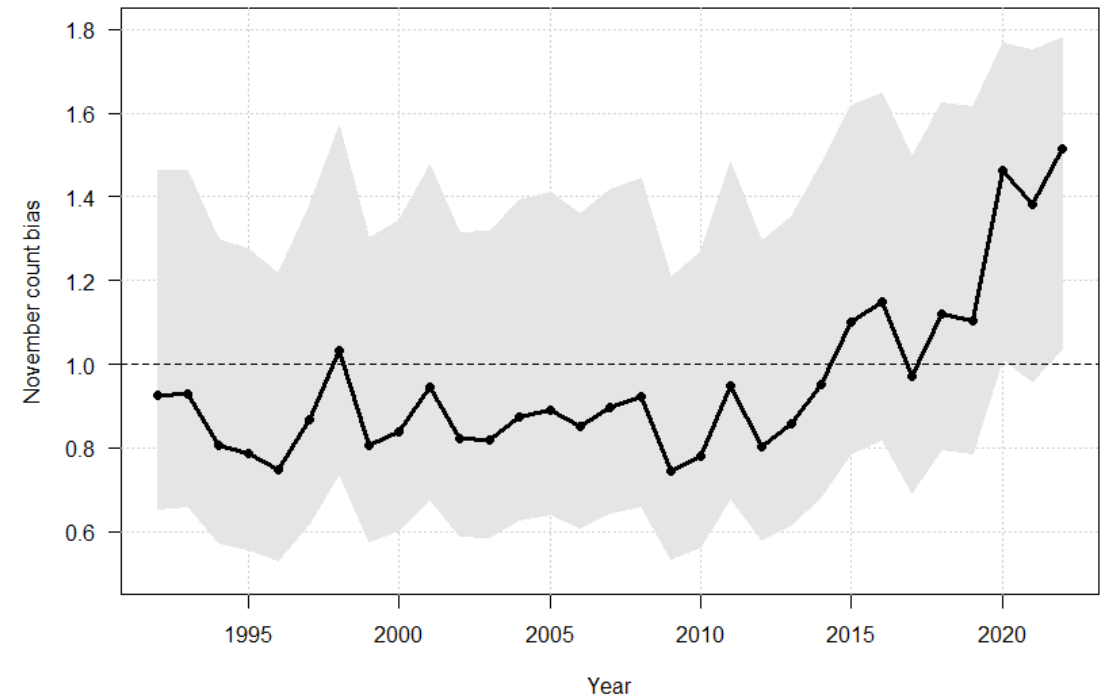
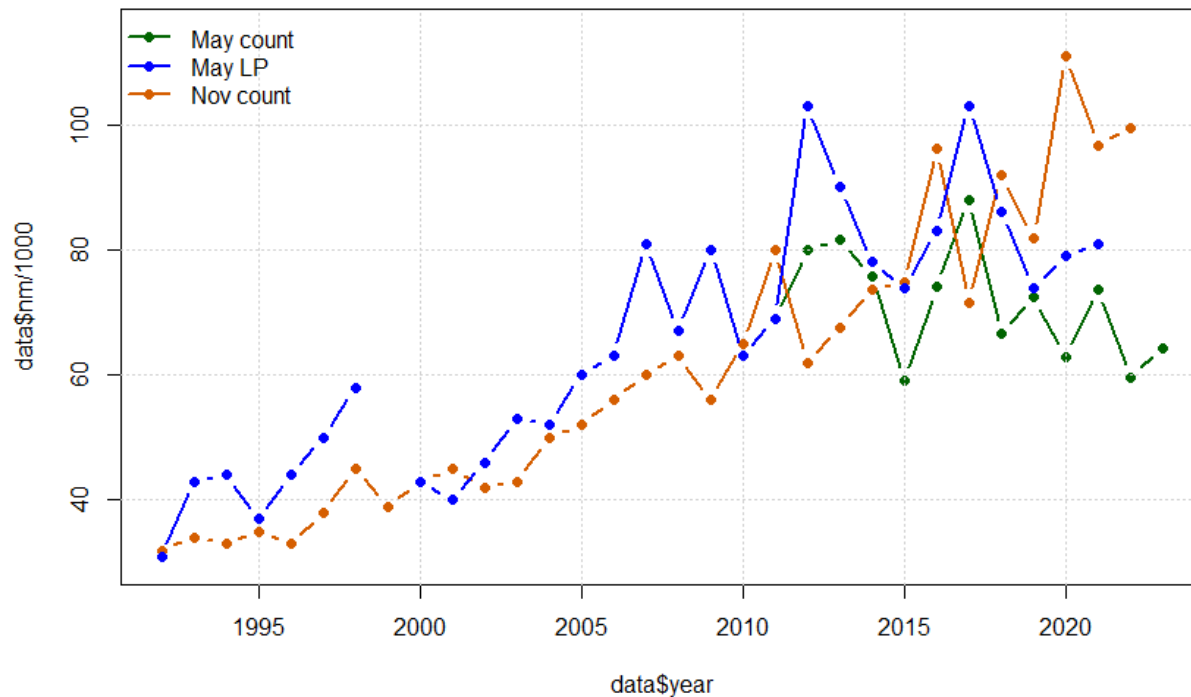
New population



AEWA European Goose Management Platform

Doc. AEWA/EGMIWG/9.8

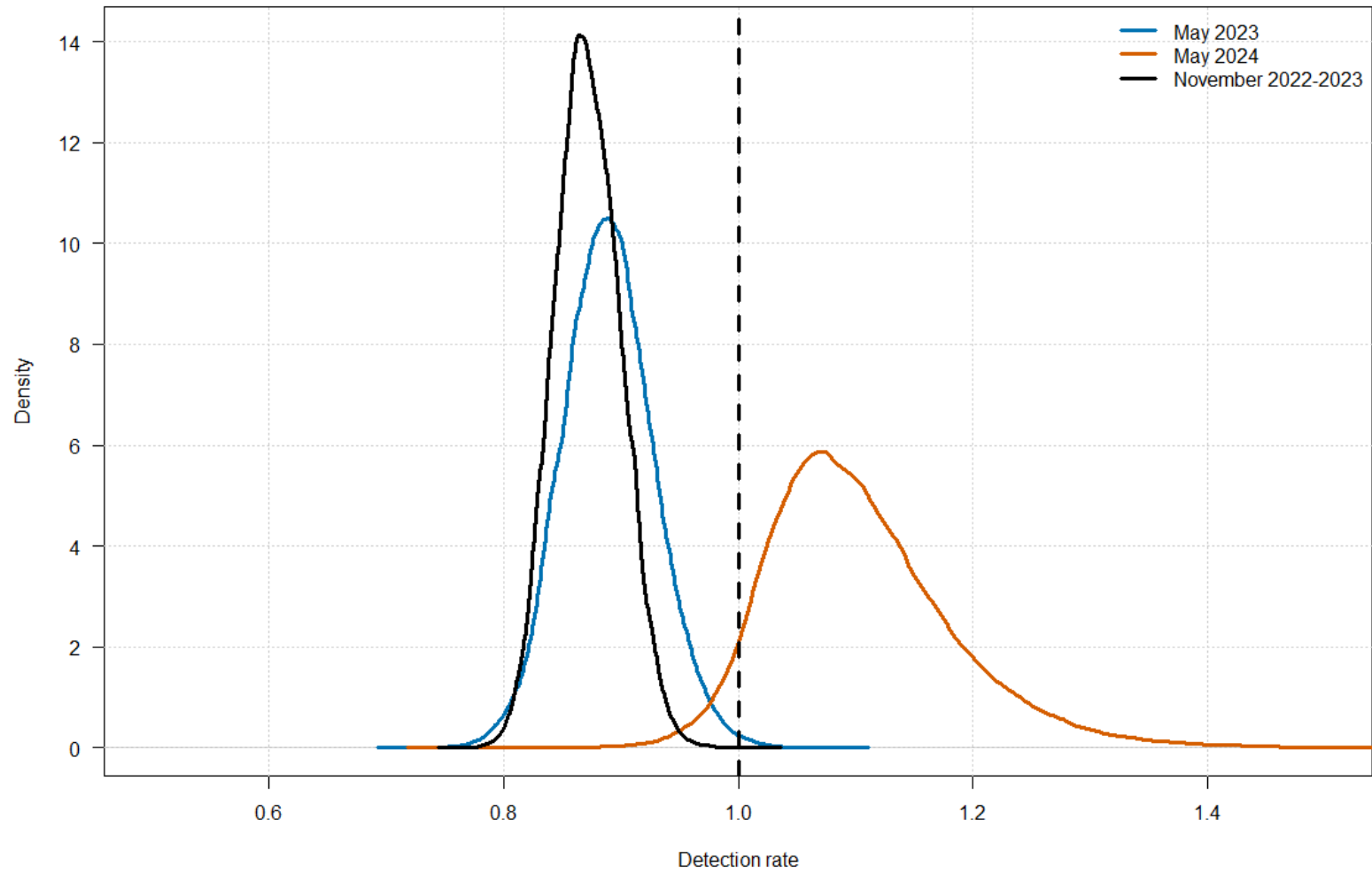
- The situation last year:
- conflicting messages from the May and November counts
 - appearance of positive bias in November count
 - loss of CMR program to “arbitrate” between May and November counts
 - conclusion that spring population had declined to near target of 60k



AEWA European Goose Management Platform

Doc. AEWA/EGMIWG/9.8

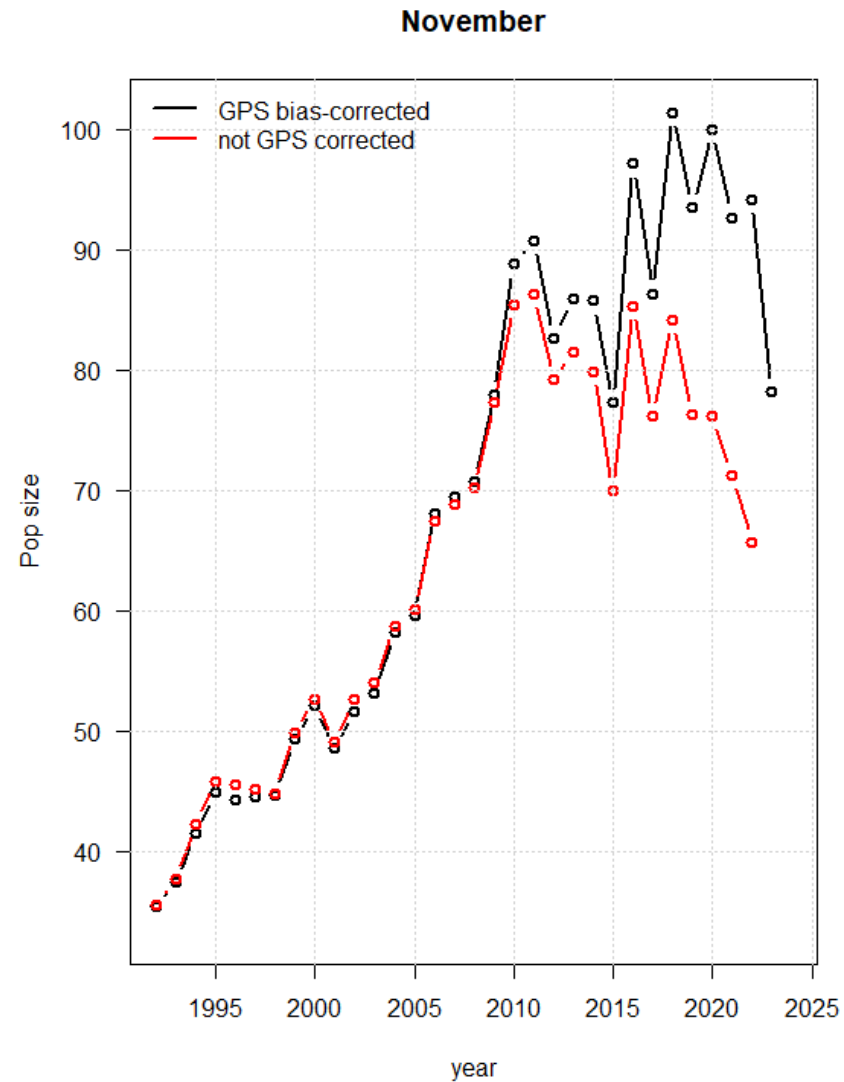
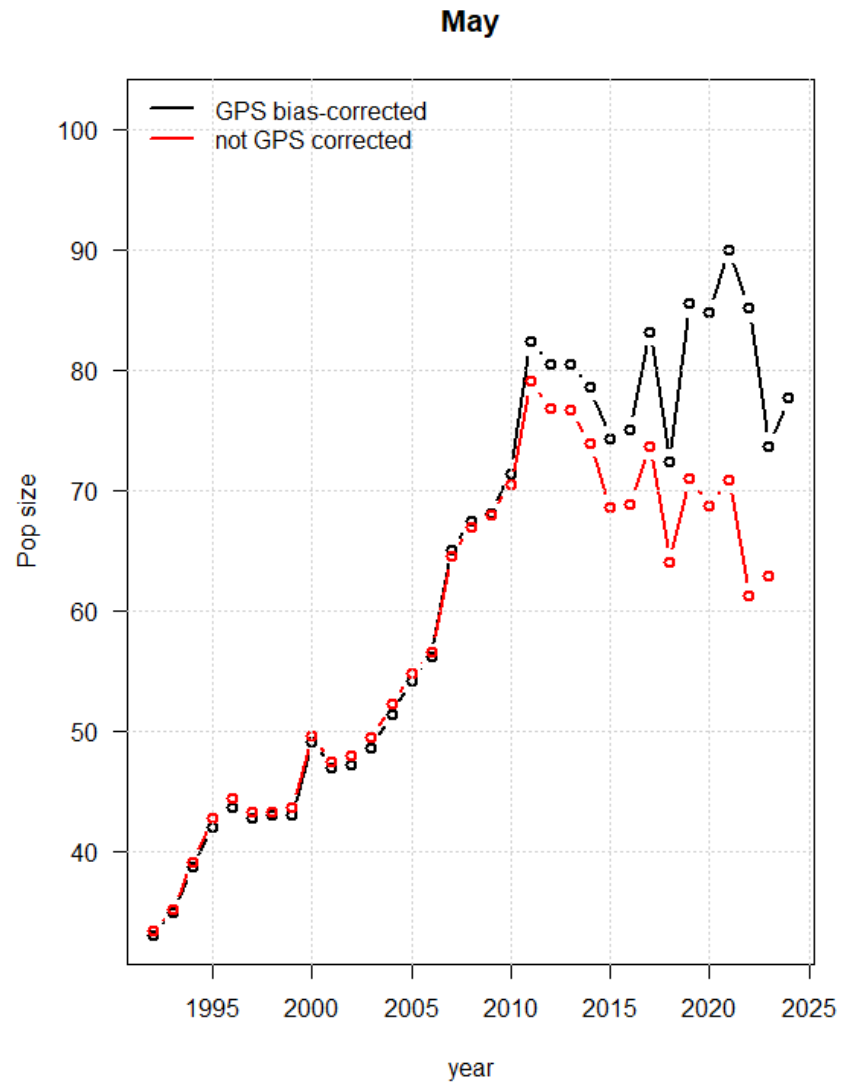
IPM-based estimates of mean bias based on co-location of counts and GPS tags



AEWA European Goose Management Platform

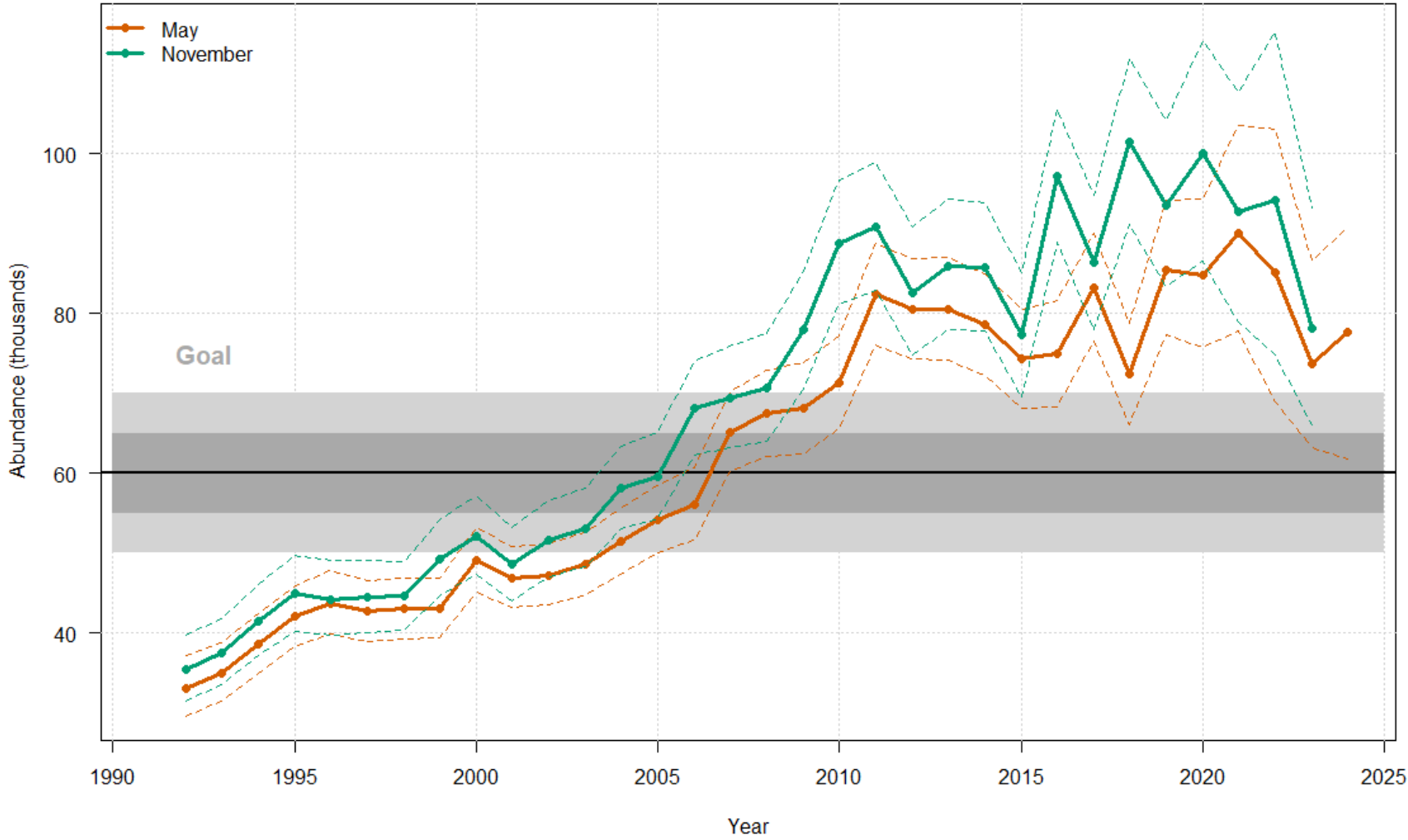
Doc. AEWA/EGMIWG/9.8

IPM-based estimates of population size, spring and autumn



AEWA European Goose Management Platform

Doc. AEWA/EGMIWG/9.8



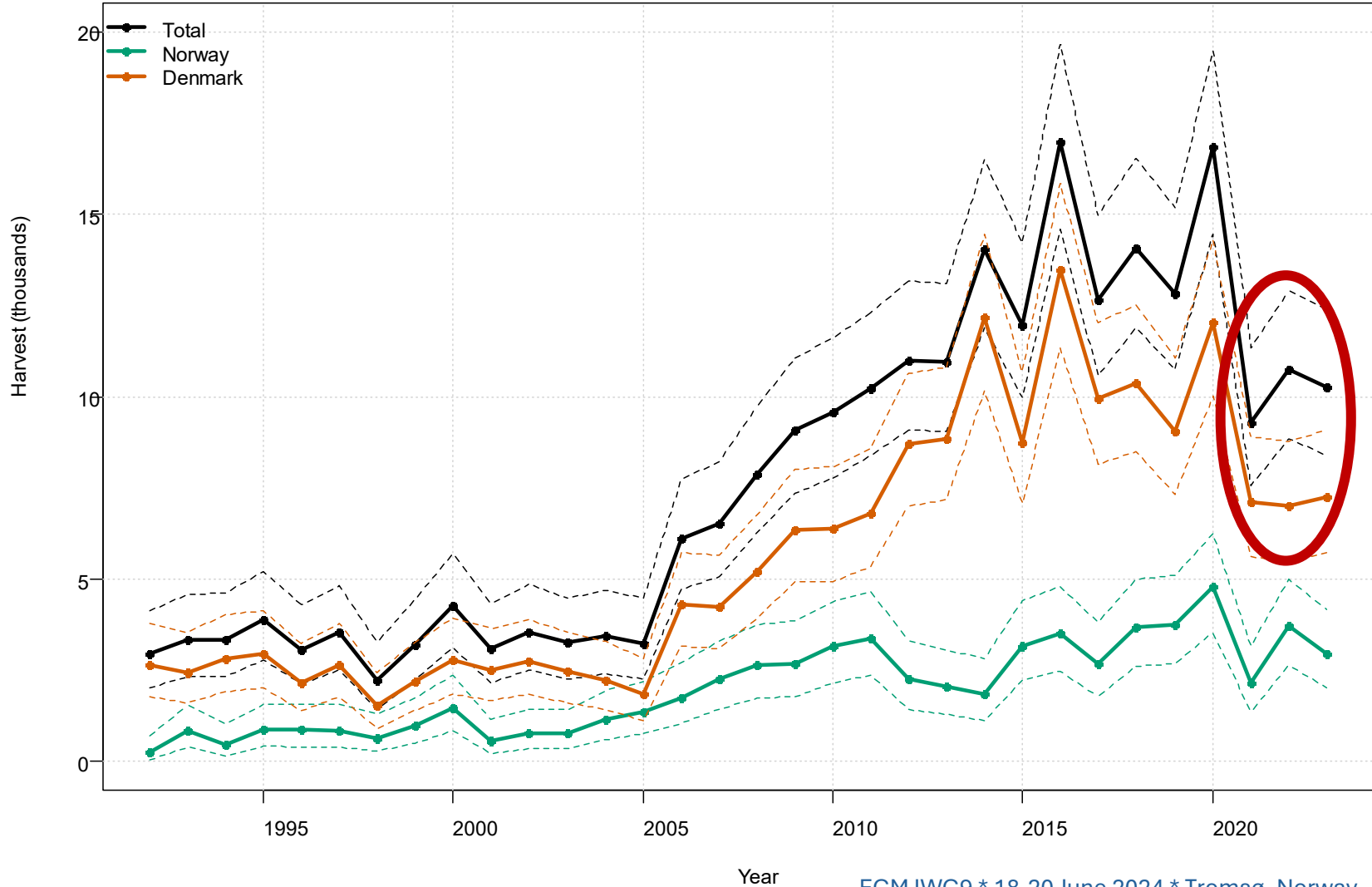
May 2024 Population:
77,713 (61,767 – 90,867)



AEWA European Goose Management Platform

Doc. AEWA/EGMIWG/9.8

IPM-based estimates of harvest



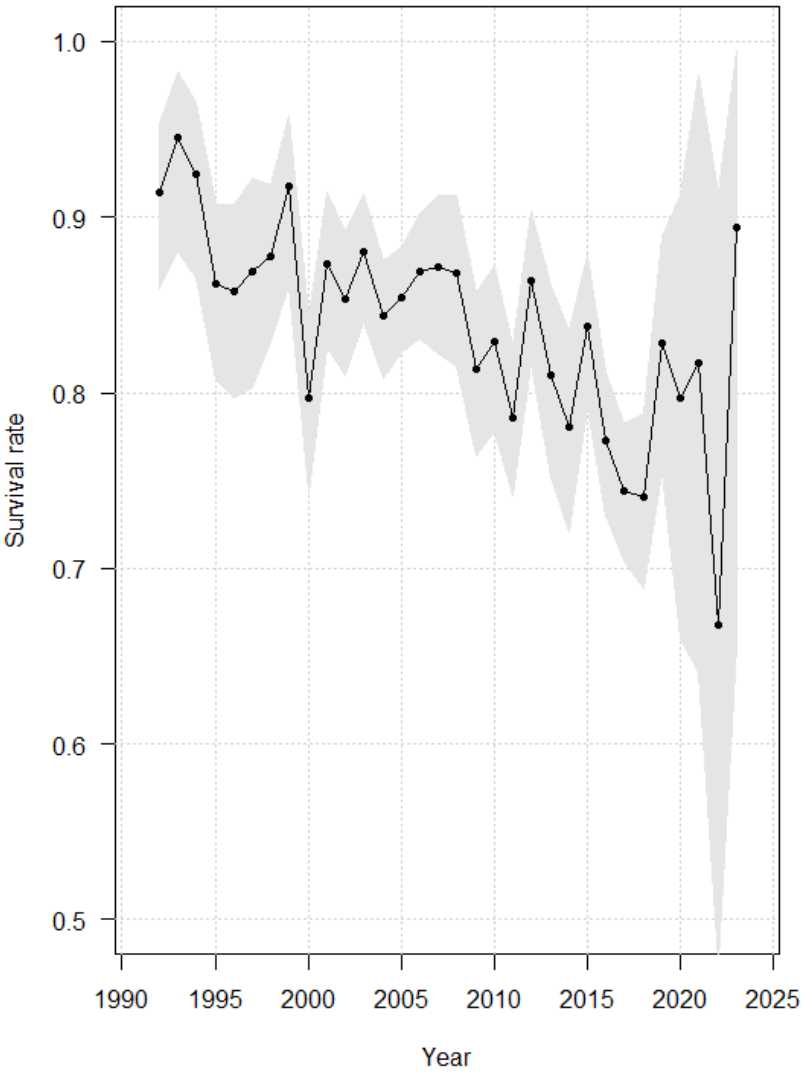
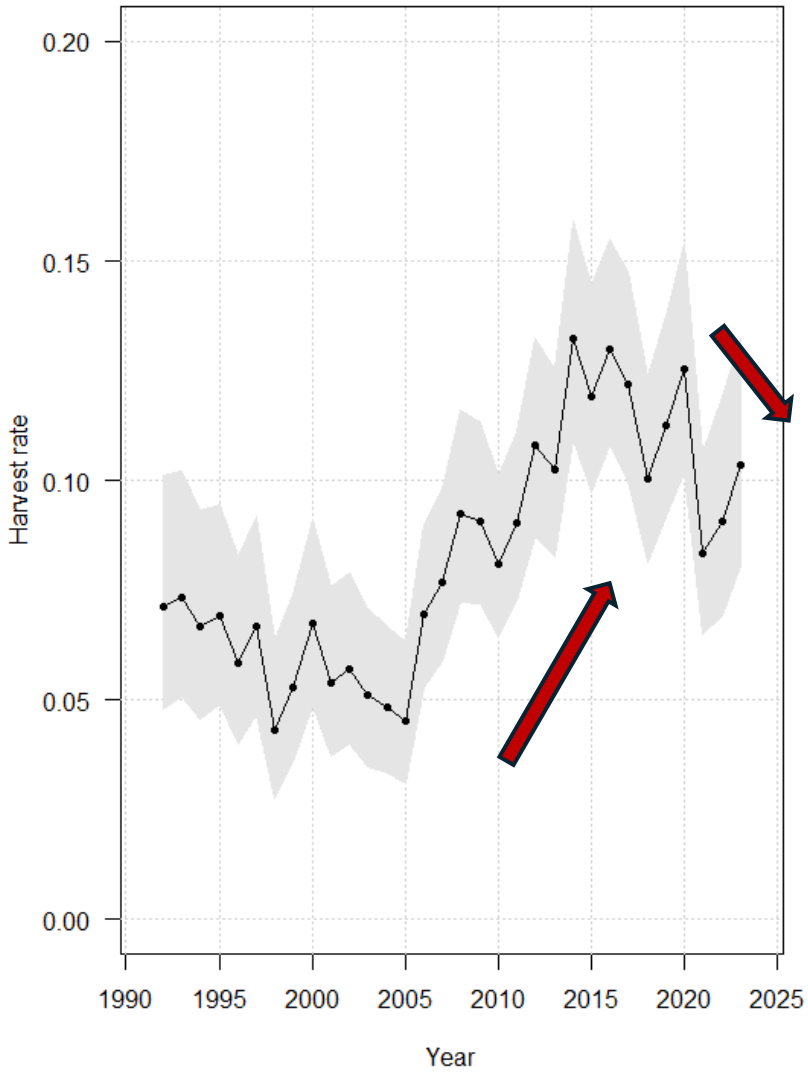
EGM IWG9 * 18-20 June 2024 * Tromsø, Norway



AEWA European Goose Management Platform

Doc. AEWA/EGMIWG/9.8

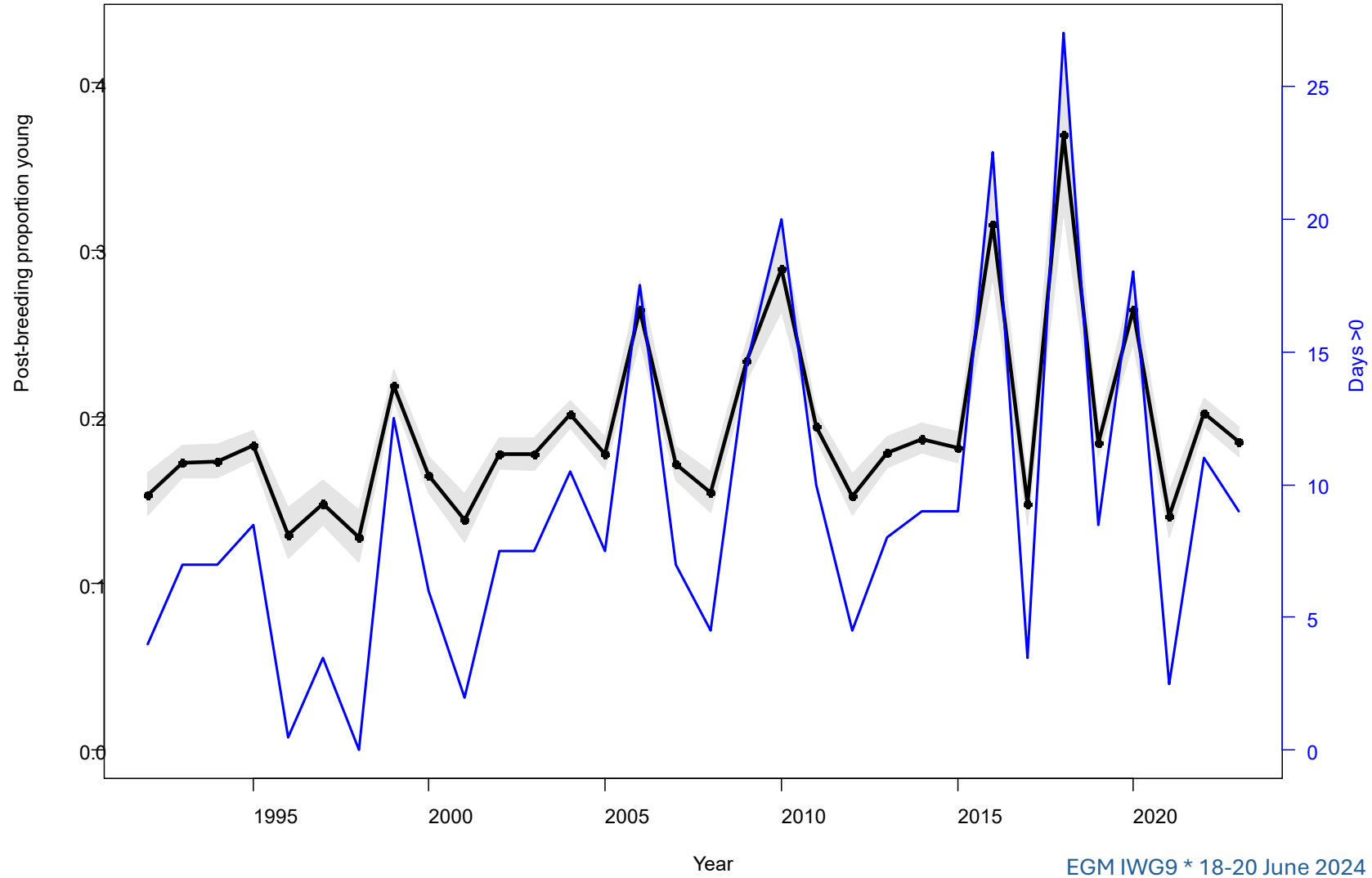
IPM-based estimates of harvest rate and survival rate



AEWA European Goose Management Platform

Doc. AEWA/EGMIWG/9.8

IPM-based estimates of productivity and onset of spring in Svalbard



Thaw days May 2023: 9

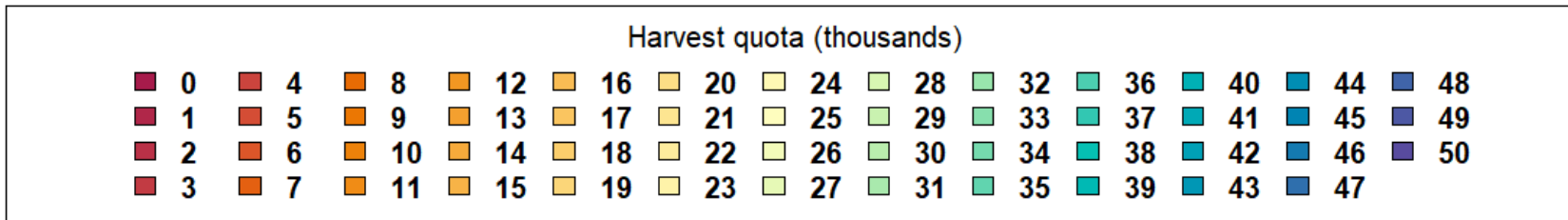
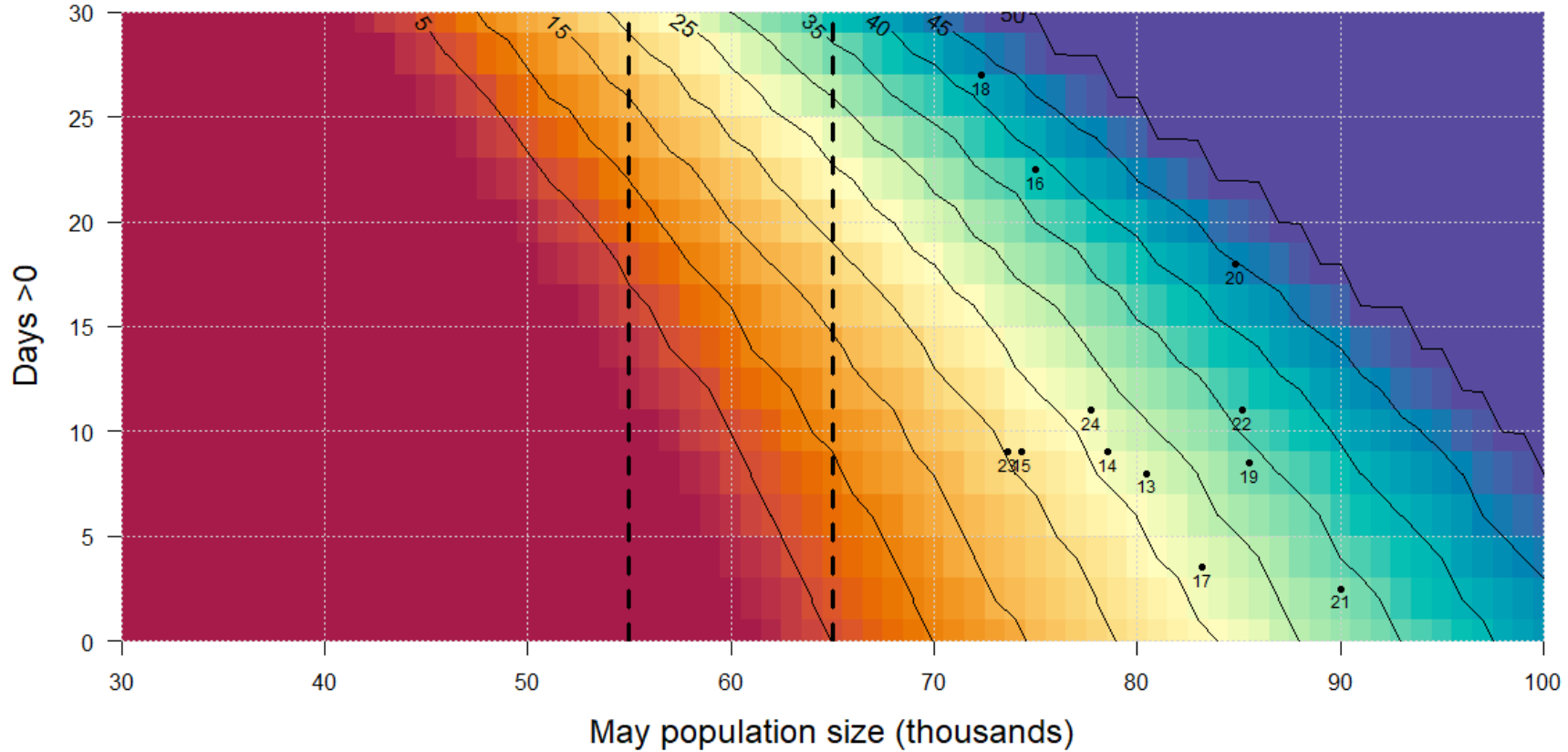
Percent young: 19%



AEWA European Goose Management Platform

Doc. AEWA/EGMIWG/9.8

Optimal harvest quotas



Management Guidance

- Spring population = 77,713
- 11 thaw days → 21% young
- Fall flight → 94,348
- Optimal quota = 26,700 (8,010 Norway; 18,690 Denmark)
- Mean harvest 2021 – 2023 = 10,111 (2,941 Norway; 7,136 Denmark)



© Magnus Elander

Conclusions

- Bias in counts
 - Prior to 2024 in May and November ca. -12%
 - Prior comparison of May counts and CMR estimates also suggested ca. -12%
 - In May 2024 ca. +10% when observers given GPS locations
 - Ongoing GPS tagging urged
- May 2024 population of 77,713 considerably above target of 60,000
- Increased harvest is needed to reduce population size
- Yet harvest has been declining in recent years, principally in Denmark