

AEWA European Goose Management Platform



© Magnus Elander

• Barnacle Goose Session: Greenland

EGMP POPULATION STATUS AND OFFTAKE ASSESSMENT REPORT 2024

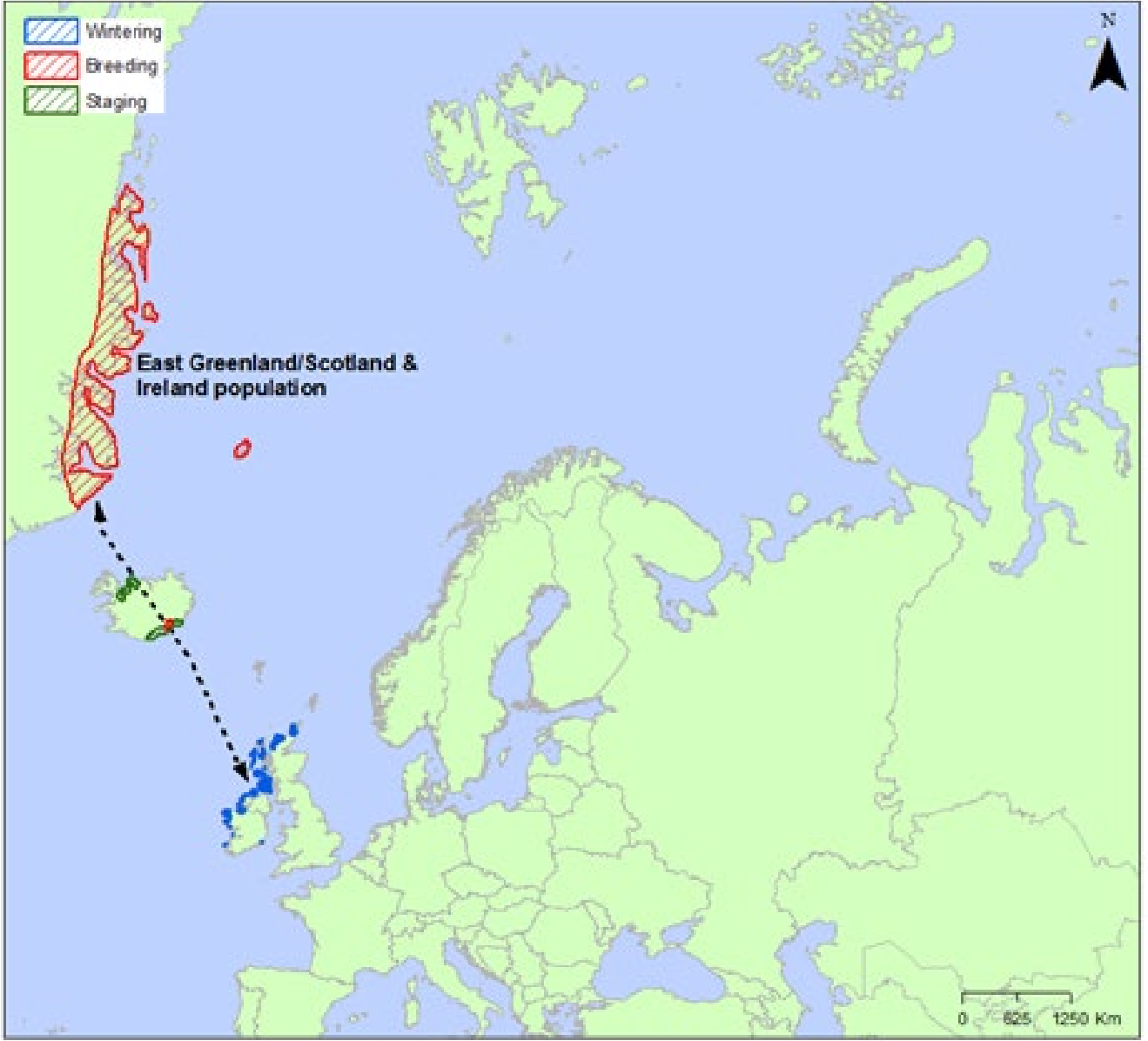
Dr. Fred Johnson

EGM IWG9 * 18-20 June 2024 * Tromsø, Norway



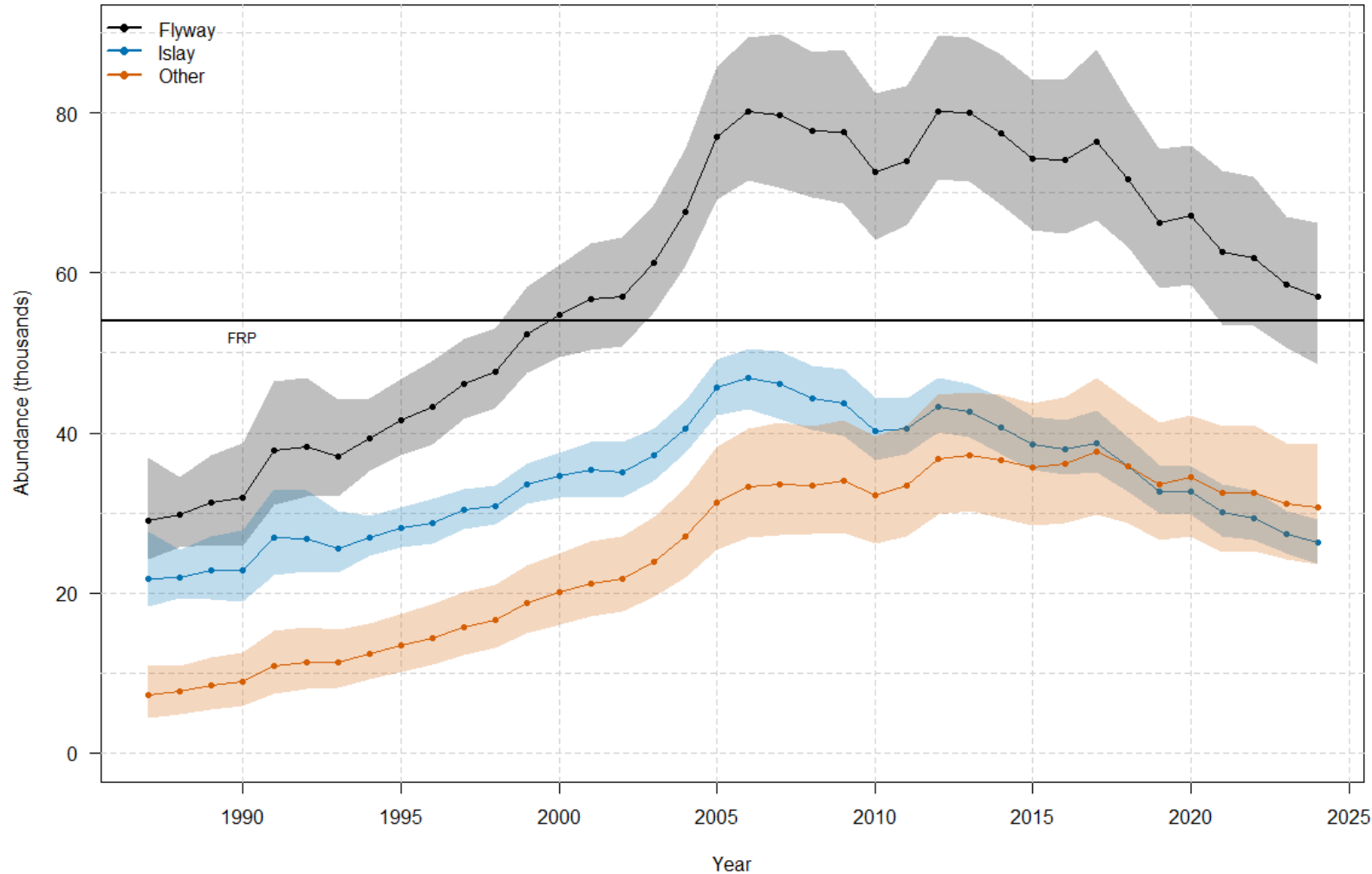
AEWA European Goose Management Platform

Doc. AEWA/EGMIWG/9.8



AEWA European Goose Management Platform

Doc. AEWA/EGMIWG/9.8



→ peak populations of 80,000 in 2006 and 2012

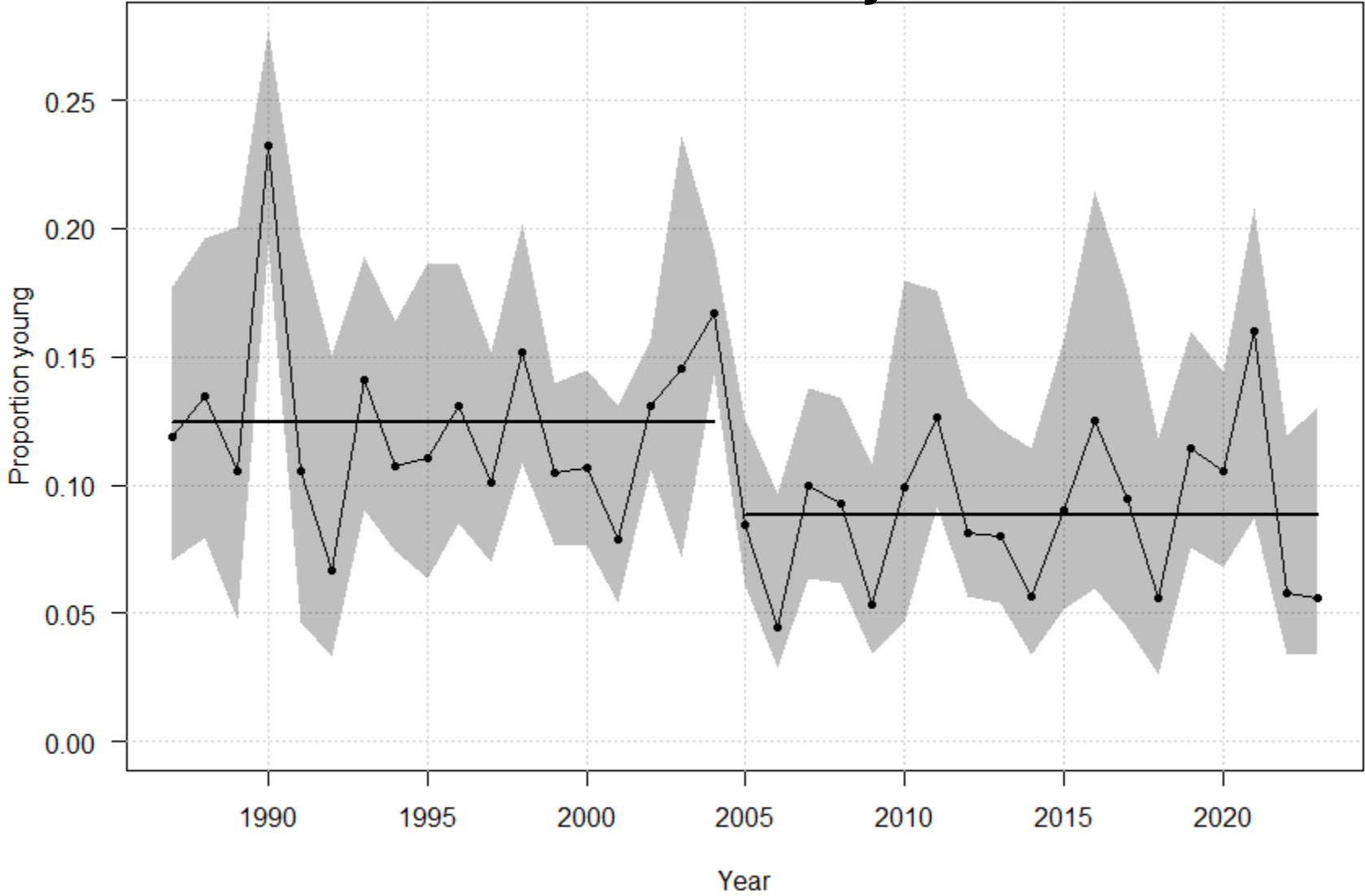
→ declined to 56,994 (48,616 – 66,230) in March 2024

→ 24% probability that $N < 54,000$

AEWA European Goose Management Platform

Doc. AEWA/EGMIWG/9.8

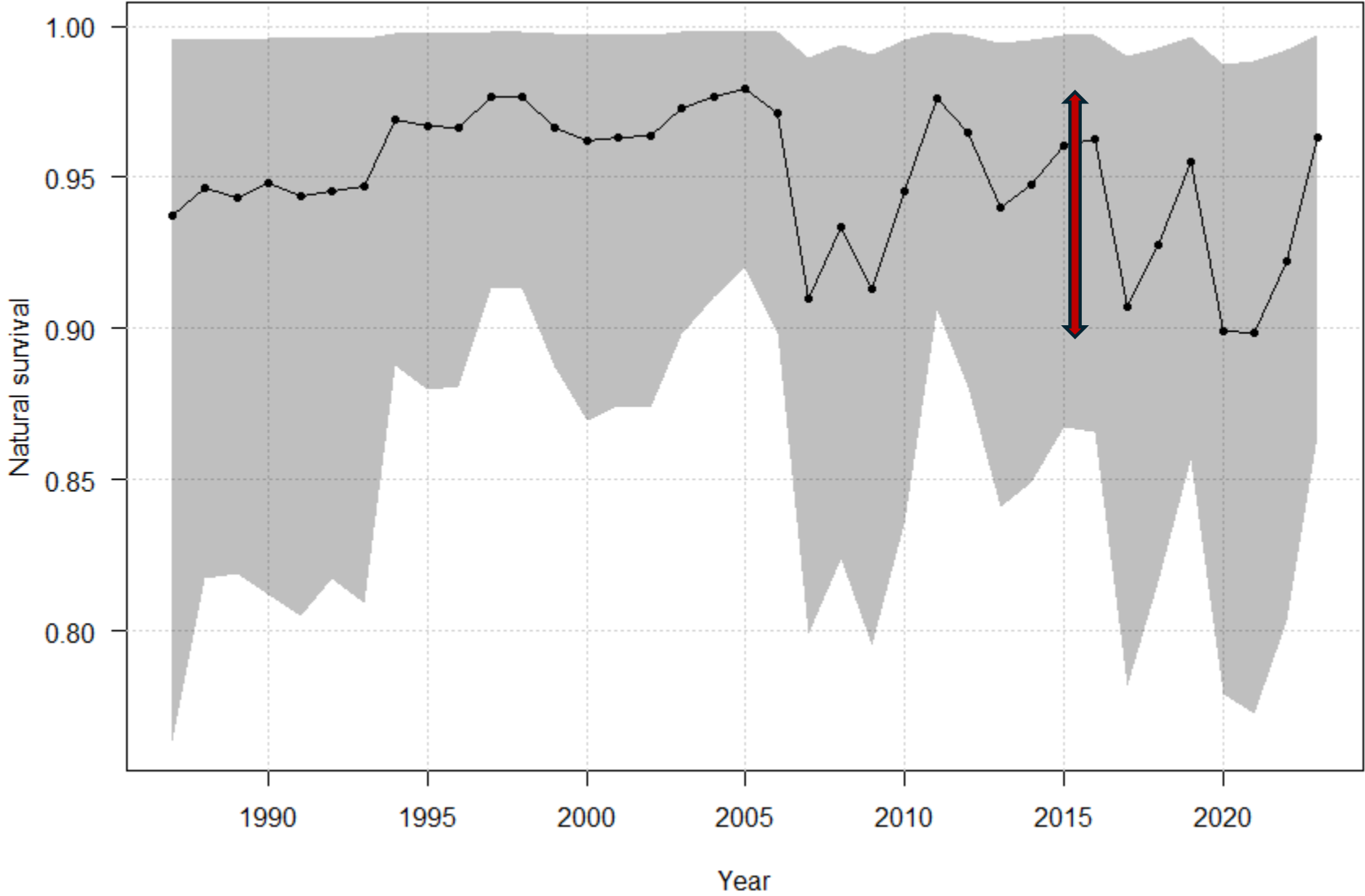
Productivity



AEWA European Goose Management Platform

Doc. AEWA/EGMIWG/9.8

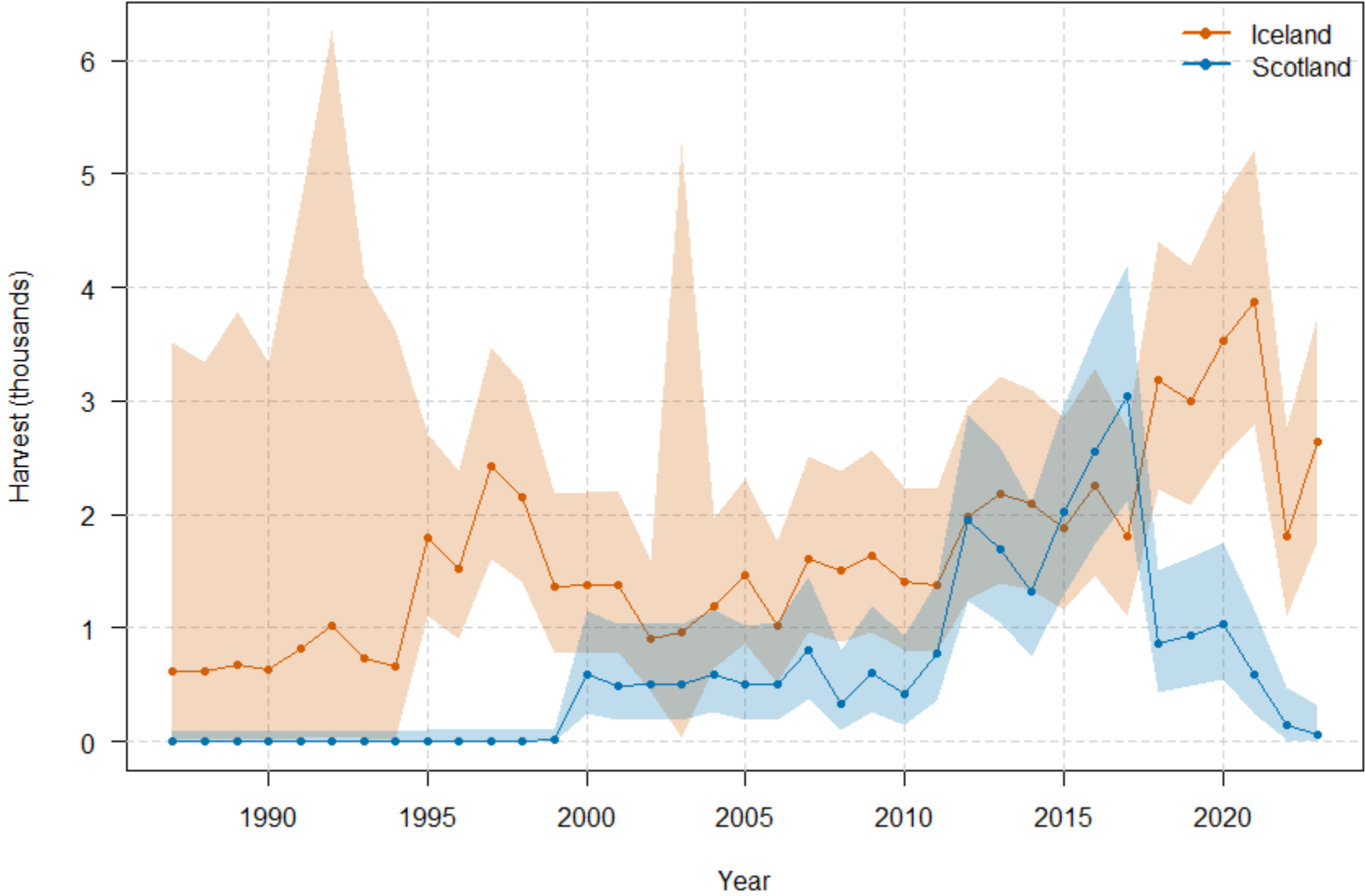
Natural survival



AEWA European Goose Management Platform

Doc. AEWA/EGMIWG/9.8

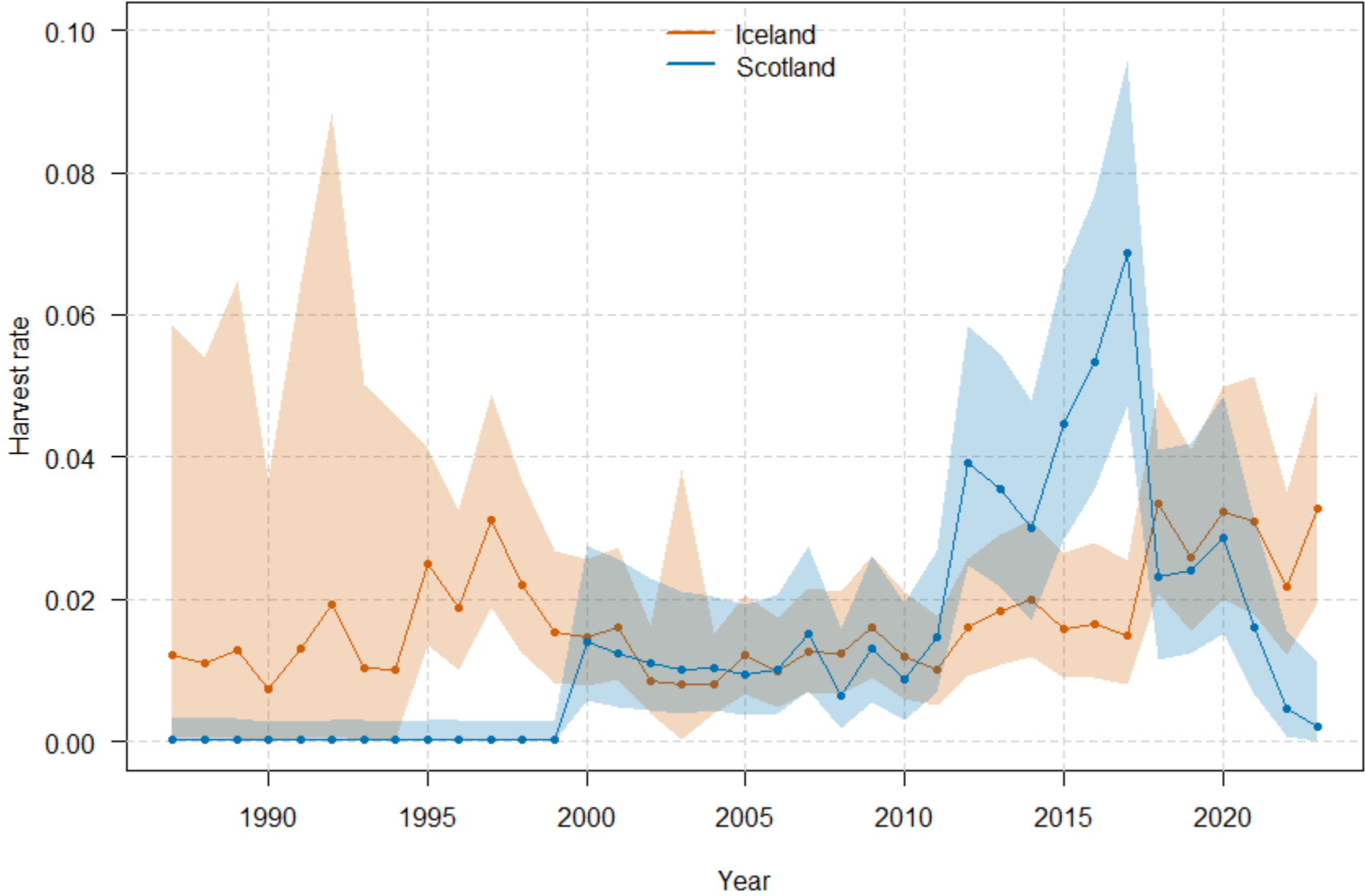
Harvests



AEWA European Goose Management Platform

Doc. AEWA/EGMIWG/9.8

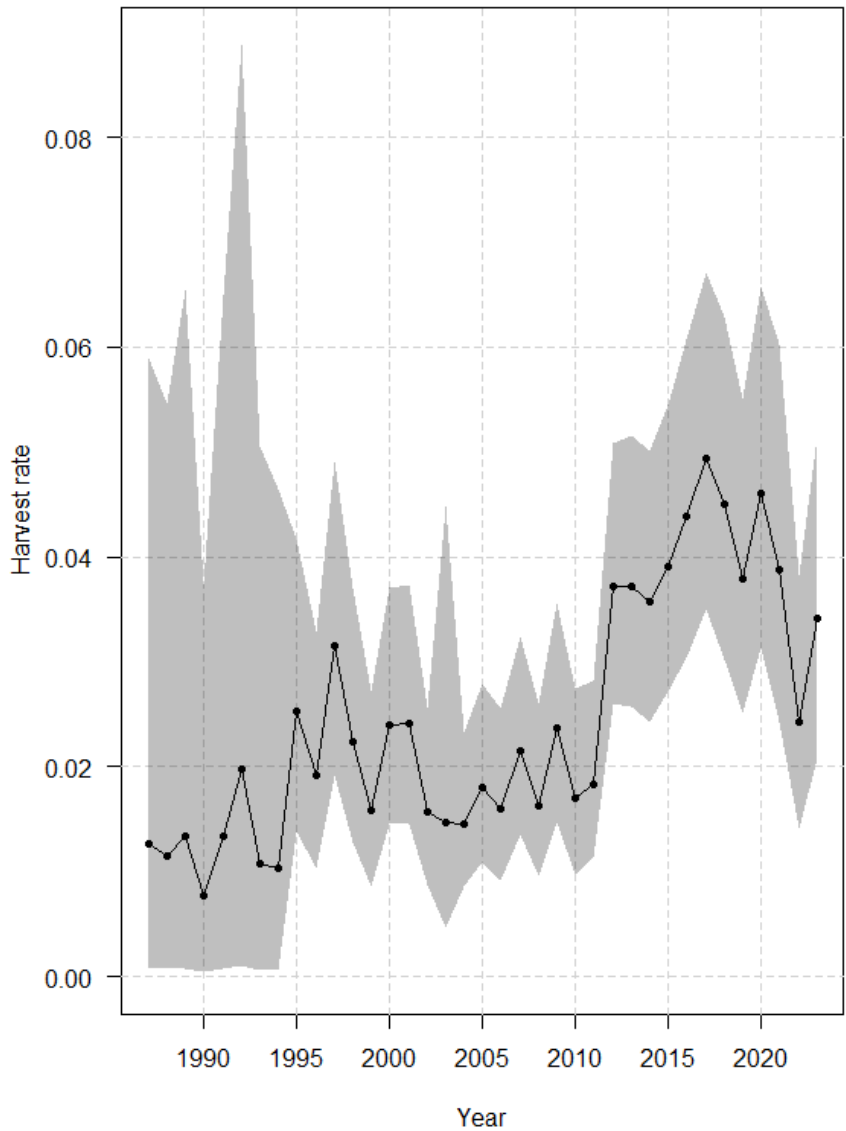
Harvest rates



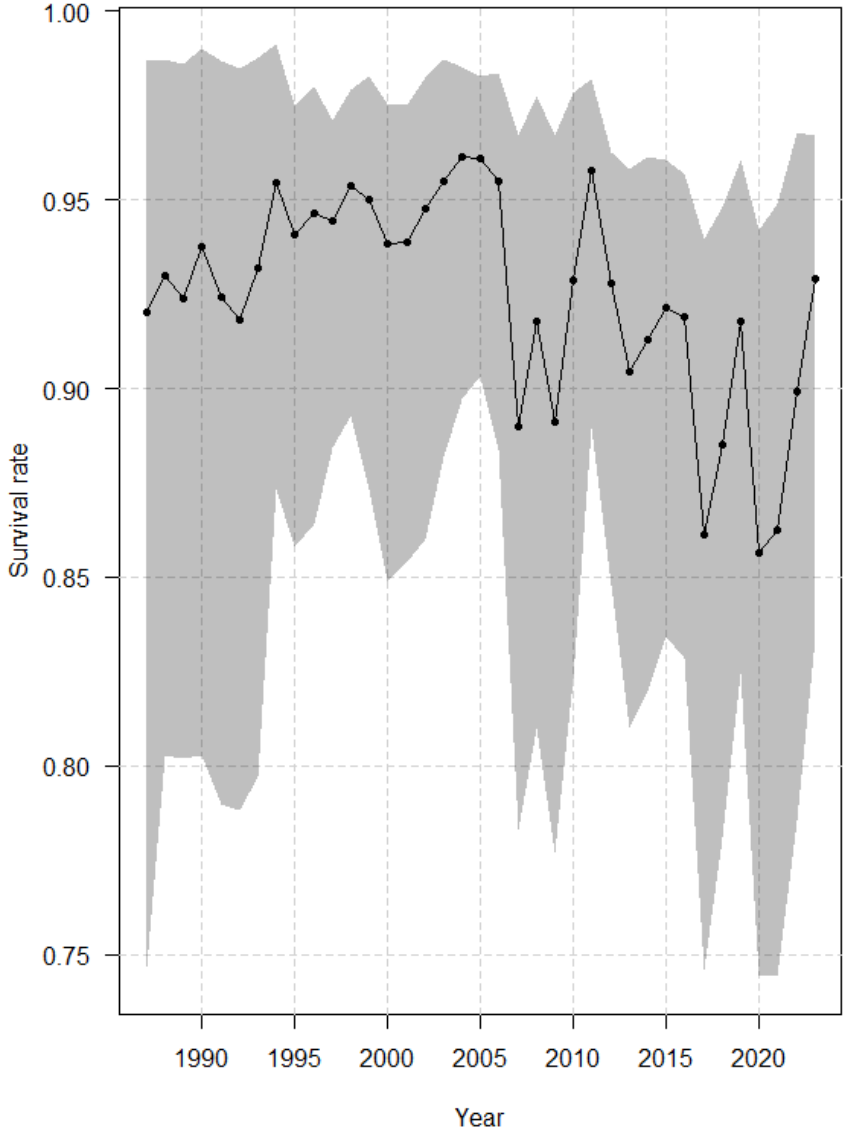
AEWA European Goose Management Platform

Doc. AEWA/EGMIWG/9.8

Harvest rate



Annual survival



Management guidance



Scenario	h_i	h_s	h	H_i	H_i	$P(N_{2026} < 54k)$
hypothetical	0.000	0.000	0.000	0	0	0.12
hypothetical	0.005	0.005	0.0070	471	158	0.16
hypothetical	0.010	0.010	0.0150	920	311	0.22
Last 5-year mean	0.028	0.015	0.0347	2,609	366	0.40
Year 2023	0.034	0.003	0.0353	3,116	60	0.43

AEWA European Goose Management Platform

Doc. AEWA/EGMIWG/9.8

What is an acceptable level of risk?

	Offtake (k)																								
March pop (k)	0.000	0.250	0.500	0.750	1.000	1.250	1.500	1.750	2.000	2.250	2.500	2.750	3.000	3.250	3.500	3.750	4.000	4.250	4.500	4.750	5.000	5.250	5.500	5.750	6.000
54.0	0.29	0.31	0.32	0.33	0.35	0.37	0.38	0.39	0.41	0.43	0.45	0.46	0.48	0.49	0.51	0.53	0.54	0.56	0.58	0.59	0.61	0.62	0.63	0.65	0.65
55.0	0.24	0.25	0.27	0.28	0.29	0.30	0.32	0.34	0.35	0.37	0.38	0.39	0.42	0.43	0.44	0.46	0.47	0.49	0.51	0.53	0.54	0.56	0.57	0.58	0.60
56.0	0.19	0.20	0.21	0.22	0.24	0.25	0.27	0.28	0.29	0.31	0.31	0.33	0.35	0.37	0.38	0.40	0.41	0.42	0.44	0.46	0.47	0.49	0.51	0.51	0.54
57.0	0.15	0.16	0.17	0.18	0.19	0.20	0.22	0.22	0.24	0.25	0.26	0.27	0.29	0.31	0.32	0.34	0.35	0.36	0.38	0.39	0.41	0.42	0.44	0.45	0.46
58.0	0.11	0.12	0.13	0.14	0.15	0.16	0.17	0.17	0.19	0.21	0.21	0.22	0.24	0.25	0.27	0.28	0.29	0.31	0.32	0.33	0.35	0.37	0.37	0.39	0.41
59.0	0.08	0.09	0.10	0.11	0.12	0.13	0.13	0.14	0.15	0.16	0.17	0.19	0.20	0.20	0.21	0.22	0.24	0.25	0.26	0.28	0.30	0.31	0.32	0.33	0.35
60.0	0.06	0.07	0.07	0.08	0.09	0.09	0.10	0.11	0.12	0.12	0.13	0.15	0.15	0.16	0.18	0.19	0.20	0.20	0.22	0.23	0.24	0.26	0.26	0.28	0.29
61.0	0.05	0.05	0.06	0.06	0.07	0.07	0.08	0.09	0.09	0.10	0.10	0.11	0.12	0.13	0.13	0.15	0.15	0.16	0.17	0.18	0.20	0.21	0.22	0.23	0.24
62.0	0.03	0.04	0.04	0.04	0.05	0.05	0.06	0.06	0.06	0.07	0.08	0.09	0.09	0.10	0.11	0.11	0.12	0.13	0.13	0.15	0.16	0.16	0.17	0.19	0.20
63.0	0.02	0.02	0.03	0.03	0.03	0.04	0.04	0.05	0.05	0.06	0.06	0.06	0.07	0.08	0.08	0.09	0.09	0.10	0.10	0.11	0.12	0.13	0.14	0.15	0.16
64.0	0.02	0.02	0.02	0.02	0.02	0.03	0.03	0.03	0.04	0.04	0.04	0.05	0.05	0.05	0.06	0.07	0.08	0.08	0.08	0.09	0.10	0.10	0.11	0.12	0.13

Conclusions

- Population has been declining for ca. 10 years
 - Lower productivity
 - Higher and more variable natural mortality
 - Higher offtake rates
- Currently a 24% probability of being below the FRP
- A continued offtake rate of ca. 3% likely to result in a ca. 40% probability of being below the FRP in 2026
- What makes for an acceptable level of risk is a subjective judgement and the purview of the IWG (but standards are needed)